

AGRICULTURAL ECONOMICS

STUDENT HANDBOOK 2023-2024



CELEBRATING OVER 100 YEARS OF ACADEMIC EXCELLENCE AT TEXAS A&M UNIVERSITY!

TABLE OF CONTENTS

I. WELCOME	4
II. MAJOR AND DEPARTMENTAL OVERVIEW	5-7
<i>Who Hires Our Majors?</i>	
<i>So What's the Difference Between Degrees?</i>	
<i>Did You Know? Fun Facts about the Department of Agricultural Economics</i>	
III. ADVISING INFORMATION	8-16
<i>AGLS Advising Hub Information</i>	
<i>Meet Your Academic Advisors</i>	
<i>How to Book an Appointment with Navigate</i>	
<i>Meeting with Your Advisor: Good Things to Know</i>	
<i>Academic Advising Virtual Office Resources</i>	
<i>Tips for Academic Advising</i>	
<i>Degree Planner Information</i>	
IV. B.S. IN AGRIBUSINESS (AGBL/AGBU)	19-22
<i>Degree Sheet</i>	
<i>Suggested Coursework by semester</i>	
<i>Core Business Knowledge Courses (CBK)</i>	
<i>International Electives List</i>	
V. B.S. IN AGRICULTURAL ECONOMICS	23-43
<i>Finance and Real Estate (FRE)</i>	
<i>Food Marketing Systems (FMS)</i>	
<i>Policy and Economic Analysis (PEA)</i>	
<i>Rural Entrepreneurship (RUE)</i>	
<i>3+2 Program</i>	

TABLE OF CONTENTS - CONTINUED

VI. B.S. IN FINANCIAL PLANNING 44-45

*Check out our newest major in the
Department of Agricultural Economics!*

VII. MINORS AND CERTIFICATES 46-51

*Enhance Your AGECE Coursework
Minors Offered by the Department of
Agricultural Economics
Popular Minors
Popular Certificates*

VIII. GRADUATE INFORMATION 52-53

*MAB Program
Agricultural Economics Graduate Program*

IX. ENHANCE YOUR STUDENT EXPERIENCE! 54-68

*AGECE Honors Program
Honors Checklist
Study Abroad
Internships
AGECE Student Organizations and Events
Scholarships*

X. TAMU PROCEDURES

69-90

<i>GPA Requirements</i>	
<i>Graduation and Aggie Ring Requirements</i>	
<i>Communication Requirements</i>	
<i>Using Howdy</i>	
<i>Registration Holds</i>	
<i>Registering for Classes</i>	
<i>Registration Periods</i>	
<i>Success Tools</i>	
<i>Core Curriculum</i>	
<i>Q-drops and Withdrawals</i>	
<i>Dismissal and Probation Policies</i>	
<i>Helpful Links</i>	
<i>Terms and Definitions</i>	
<i>Common Course Substitutions and General Tips</i>	
<i>Finding a Technical Agriculture Elective</i>	
<i>AGEC Classes and Prerequisites</i>	
<i>MISC. Classes and Prerequisites</i>	
<i>AGEC Class Offerings by Semester</i>	
<i>On-Campus Resources</i>	



SOCIAL MEDIA

TWITTER

@ageconomics
@agec_honors

FACEBOOK

@tamuagec

INSTAGRAM

@tamuagec

CONTACT US

AGEC UNDERGRADUATE OFFICE

*600 John Kimbrough BLVD,
AGLS Suite 214
College Station Tx, 77843*

979-845-4911

<https://agecon.tamu.edu>

WELCOME

to the Department of
Agricultural Economics!

As a student in this department you are advised to use this handbook (along with other important sources of official information) to aid in your successful navigation of our program. While we have worked diligently to make sure that this information is as accurate as possible, please note that changes in information, deadlines, and curriculum can occur and you should plan regular visits with your academic advisor to ensure that you are staying on track for your degree requirements. Also, please be aware that each student has the responsibility to be fully acquainted with and to comply with the Texas A&M University Student Rules. Official information sources include:

Undergraduate Catalog
University Student Rules
Schedule of Courses
AGEC Undergraduate Website
"AGEC Undergraduate Newsletter"

<https://catalog.tamu.edu>
<https://student-rules.tamu.edu/>
<https://howdy.tamu.edu/>
<https://agecon.tamu.edu/>
Emailed out each Friday

The Agricultural Economics Undergraduate Office will use your TAMU student email for all communication (this account will also be your official form of communication with the AGECE Department and Texas A&M University), so be sure to check your TAMU email on a daily basis!



WHO

HIRES

DEPARTMENT OF AGRICULTURAL
ECONOMICS MAJORS?

IN A WORD: ANYONE!

**HERE'S A LOOK AT WHO HAS HIRED
OUR STUDENTS IN THE PAST!**

Amazon
Bayer
Boeing
Capital Farm Credit
Cargill
Charles Schwab
Citi
Corteva
Disney
DR Horton
Frito-Lay
Goosehead Insurance
HEB
Lockheed Martin
Mustang Cat
Northwestern Mutual
PepsiCo
Re/Max
Southwest Airlines
USDA
Wells Fargo
and many more!

FOR MORE INFORMATION ON POTENTIAL CAREERS FOR MAJORS IN THE
DEPARTMENT OF AGRICULTURAL ECONOMICS, PLEASE SEE THE TYRUS
R. TIMM HONOR REGISTRY AND TAMU CAREER CENTER SURVEYS.

SO WHAT'S THE DIFFERENCE?

IS A DEGREE IN AGRIBUSINESS OR AGRICULTURAL ECONOMICS OR FINANCIAL PLANNING THE RIGHT FIT FOR YOU?

Wondering what our majors do? We are the financial side of the agricultural industry! From working for food and fiber production companies to the oil and gas industry, from working for yourself as a small business entrepreneur to working for multi-billion dollar corporations, students in these majors do it all!

At a basic comparison level, the Agribusiness degree will contain more business-related classes while a degree in Agricultural Economics will include more economics-related coursework. Sounds simple, right? Not quite!

The Agribusiness degree is primarily a theory-based degree, and will combine core business principles (through classes from the Mays Business School with economic theory courses as preparation for learning how to apply these concepts in upper-level AGECE capstone classes. The Agribusiness program provides a comprehensive, versatile degree in business for students who want to pursue a career in either the agricultural sector or the non-agricultural sector; however, it does include fewer elective options.

In contrast, the Agricultural Economics degree is an applied degree that has less emphasis on the theoretical. This degree combines business principle classes taught in the Department of Agricultural Economics with economic theory courses and focuses on teaching practical (i.e. real world) applications of marketing, management, finance, economics, and policy. With a degree in Agricultural

Economics, students are also able to tailor their degree towards their interests by selecting an emphasis area such as Finance and Real Estate, Food Marketing Systems, Policy and Economic Analysis, or Rural Entrepreneurship. With more elective spaces available, students also find it easier to work in minors, certificates, or other coursework.

Last (but not least!), Financial Planning is an exciting NEW major that will be offered for the first time in Fall 2023. As one of the fastest-growing career fields, more people are turning to financial planners to help them make informed decisions to achieve their financial goals. The Texas A&M Financial Planning Program is designed to prepare you for this exciting profession while fulfilling the core educational curriculum necessary to sit for the CFP® Certification Examination. We pride ourselves in providing knowledge that goes beyond the exam and incorporate real world materials essential to developing skilled, comprehensive financial planners.

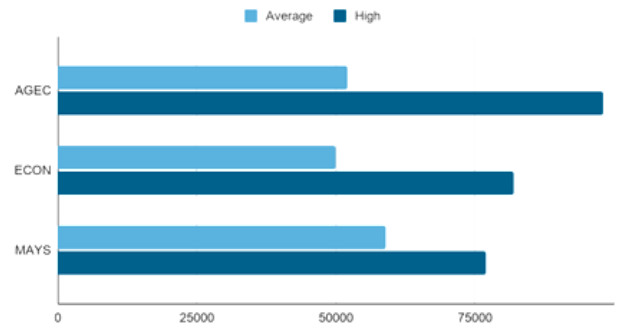
Read more to find out additional details about what you can do with each degree option!

DID YOU KNOW ???

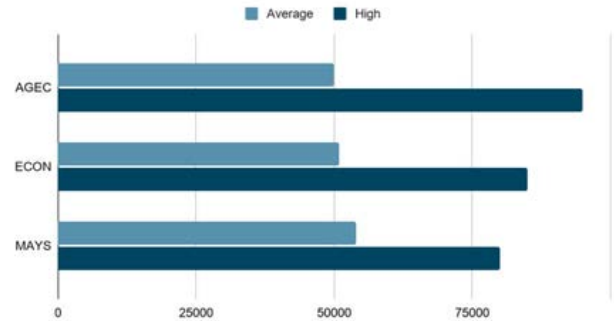
HERE'S A FEW FUN FACTS ABOUT THE
DEPARTMENT OF AGRICULTURAL ECONOMICS
AT TEXAS A&M UNIVERSITY!

- The Department of Agricultural Economics at Texas A&M is the largest in the United States with approximately 1,200 students
- Students majoring in AGECE and AGBU will learn more about the challenges that are unique to agribusinesses, but will also be prepared for jobs in both the agricultural sector and the non-agricultural sector

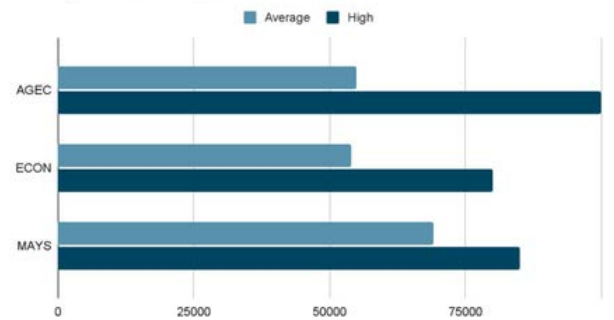
Salary Distributions 2021



Salary Distributions 2020



Salary Distributions 2019



TAMU CAREER CENTER SURVEY

"Who Hires My Major." Texas A&M Career Center, 21 May 2021,
<https://aggiesurveys.tamu.edu/public/Reports.aspx>

The Texas A&M University Career Center surveys graduating Aggies each year to find out more details about their post-graduation job expectations. Here's a look at the average salary of an AGECE/AGBU student when compared with students in similar programs!

AGLS Advising Hub

In the College of Agriculture and Life Sciences we have aligned our academic advising to better support students during their time at Texas A&M University. We have assembled a diverse and knowledgeable advisor community dedicated to providing our students with high-quality academic advising services. Our advisors are grouped into advising hubs based on location, courses of study and/or related commonalities.

Like, Share, Follow



@TAMUAGLSAdvisingHub



Meet Your Academic Advisors!



Melyssa-Anne Stricklin (SHE/HER/HERS)

SENIOR ACADEMIC ADVISOR

979-458-8515

MELYSSA.STRICKLIN@TAMU.EDU

Donna Adcock

ACADEMIC ADVISOR IV

979-845-4911

DONNAPA@TAMU.EDU



Bridgette Vickers

ACADEMIC ADVISOR IV

979-845-0571

BRIDGETTE.VICKERS@AG.TAMU.EDU



Kelsey Hirsch

ACADEMIC ADVISOR III

979-845-4911

KELSEYHIRSCH@TAMU.EDU



Hannah Chavarria

ACADEMIC ADVISOR III

979-845-4911

HANNAHCHAV3984@TAMU.EDU



David Roach

ACADEMIC ADVISOR II

979-862-3005

DAVID.ROACH@AG.TAMU.EDU



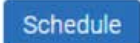


Use NAVIGATE

TO SCHEDULE YOUR ADVISING APPOINTMENTS WITH AGLS ADVISING HUB!

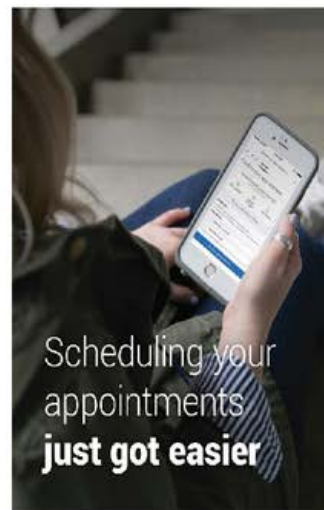
College of Ag & Life Sciences Navigate – 2 easy ways to schedule

Visit [Howdy](#)


- Go to **My Record** tab 
 - Click: **Navigate – Schedule Advising Appointments**
 - Select: 
 - Select:
Type Appt. - **Advising Texas A&M University**
College/Reason – **AG – Agriculture & Life Sciences Undergraduate Advising**
 - Choose:
Reason for Appointment – ex. **AG – General Advising**
Location by major – ex. **AG – AGLS Advising Hub** – see **Additional Details**
Appointment **Day & Time**
Review Appointment Details
- Don't forget to click 

Download [Navigate Student app](#)

Schedule and track appointments in the app!



Download today! Win Prizes!

- Search [Navigate Student](#) in the app stores
- Select **Texas A&M - College Station**
- Log in using your NetID and password
- Click  to schedule



AGEC, ALEC, HMG



Drop-In Appointments



Drop-in appointment periods are when advisors will offer a time for students without an appointment to come in on a first-come, first served basis to have their questions answered.

Since advisors are trying to help students move through the line quickly, drop-in appointments are for **quick questions only**. If offered, upcoming drop-in times will be posted in the weekly newsletter and be visible in Navigate.



MEETING WITH YOUR ACADEMIC ADVISORS

GOOD THINGS TO KNOW

Did you know it's always a good idea to plan to meet with your academic advisor at least once a semester to make sure you're on track for your degree? Your academic advisor is a partner in your academic journey as you move through and graduate from Texas A&M University and can help you explore your interests, select courses, develop your degree plan, and meet your degree requirements. Academic advisors can also connect you with academic and personal support programs, co-curricular opportunities, and career options!

Here's what your advisor will expect from you as a student:

- Attend academic advising appointments prepared. Bring all advising related materials and questions, and be sure to do your research to make sure the answers to your questions aren't easily found elsewhere.
- Clarify your personal academic and career goals
- Activate and check your TAMU e-mail account daily for communications from the University faculty, staff, and administration and read the weekly newsletter for updates.
- Check for registration holds and eligibility in HOWDY and know the academic calendar
- Take notes during the appointment
- Ask questions if you do not understand an issue or have a concern.
- Accept responsibility for your decisions and actions that affect your educational progress and goals.
- Contact your advisors yourself (i.e. advisors cannot provide information about a student or their record to parents or other individuals due to FERPA regulations)
- **If emailing, use your TAMU student account, include your UIN, and provide enough context for your advisor to understand the issue (allow at least 24-48 hours for a response).**

*In the event you are unable to attend a scheduled appointment, please be sure to cancel your appointment in Navigate. 3 "No-Shows" will prevent a student from scheduling appointments for the rest of the semester



Scheduled Appointments



Scheduled appointments can be booked using the Navigate feature in Howdy. Appointments fill up quickly during certain times of the semester, so plan on possibly having to book your appointment at least 1-2 weeks in advance.

There are several different appointment types available (such as General Advising, Minor, Q-Drop, etc.).

ALWAYS BE SURE TO READ THE COMMENTS SECTION BEFORE CONFIRMING YOUR APPOINTMENT BOOKING!



Navigate



Navigate is the appointment booking system for scheduling your academic advising appointments. Always be sure to read all comments before booking an appointment to make sure you are scheduling with the correct advisor.

If you don't see any appointment openings with your preferred advisor, there's a couple of things to know:

- Navigate automatically prevents you from seeing appointment openings that conflict with your class schedule
- During certain types of the year, advisors will offer more of specific appointment types, so if you can't find any open 30 minute General Advising appointments, you might try checking the 15 min Preregistration option, etc.
- Certain times of the semester are busier than others. If you aren't seeing any openings after checking multiple appointment types you will need to look further in advance.

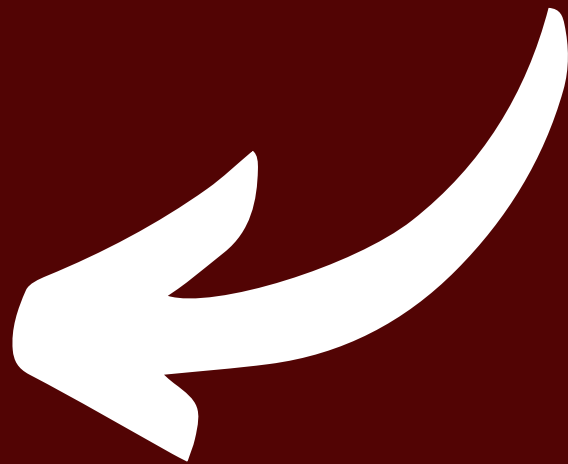
TIP:

We do not have assigned advisors, so you can book with ANY advisor in our hub that works with the Agricultural Economics, Agribusiness, or Financial Planning majors!



NEED HELP?

CHECK OUT YOUR ACADEMIC ADVISOR'S VIRTUAL OFFICE RESOURCES!



Click the Virtual Office Photos to Enter!



DID YOU KNOW: FEBRUARY-EARLY MARCH AND EARLY SEPTEMBER-OCTOBER IS THE EASIEST TIME TO SCHEDULE AN APPOINTMENT WITH YOUR ACADEMIC ADVISOR?



TIPS FOR

ACADEMIC ADVISING

KNOW WHEN TO BOOK YOUR APPOINTMENTS!

Is it taking FOREVER to find an open advising appointment? No scheduling options showing up in Navigate? Is the Drop-in Advising line taking an hour or more? This most likely means you are waiting until too late in the semester to make your advising appointments!

There are certain times during the semester when it's extremely busy (1-2 weeks before the semester starts, when preregistration opens, when degree planners are due, etc.), so be sure to book your appointment early to skip the wait!

DROP-IN ADVISING

Did you wait too long to make an advising appointment and nothing is available? Drop-ins are open periods when students can meet with an advisor on a first come, first served basis. The downside of drop-in advising is that the wait time can be long if it's a busy point in the semester, but the good news is that you don't have to wait for the next open appointment!

DON'T FORGET TO USE THE AGECS STUDENT HANDBOOK AND YOUR ADVISOR'S VIRTUAL OFFICE!

TRY TO FILL OUT YOUR ENTIRE DEGREE PLANNER BEFORE YOUR ADVISING APPOINTMENT (THIS ALLOWS YOUR ADVISOR TO MAKE BETTER CLASS SUGGESTIONS!)

DEGREE PLANNER HOLDS

Degree planners take an average of 2-4 weeks to process, so always be sure to submit yours early so that your hold can be removed before it affects registering for classes!

The Undergraduate Degree Planner is a course planning tool designed to facilitate the timely completion of your degree at Texas A&M University. To start using the Degree Planner, students can log into Howdy and select the "Degree Planner" icon at the top of the screen (the planner can also be accessed by clicking on the My Dashboard tab, and finding the Undergraduate Degree Planner channel on the right column).

All new students with 30+ credit hours are required to complete, submit, and get their Degree Planner approved prior to preregistration for their second TAMU semester.

*All continuing students must edit, submit, and get their Degree Planner approved by September 30th of every year until graduation.

How to Complete Your Degree Planner:

Part 1: TAMU Degree Planner <https://youtu.be/-1A7qIKyFQE>

Part 2: AGEC & AGBU Degree Planner Help <https://youtu.be/jnafQ-SXdiA>

TIP:

Remember, the degree planner tool in Howdy is an unofficial evaluation and may not correctly reflect your remaining coursework. After your planner is approved, **always** be sure to check your advisor's comments about the corrections that should be made!

Degree Planning Tips

AGRIBUSINESS

HINT:
Try to avoid planning more than two CBK courses in the same semester if possible!

*Degree planners do not guarantee enrollment in planned classes and are not "set in stone"

PLAN "BACKWARDS"

To make sure you are graduating by your planned semester, start with the capstone classes in your final semester and then work backwards to make sure all prerequisites have been met. For more info on course prerequisites, check out the AGECE Student Handbook!

UNIVERSITY CORE CURRICULUM

Did you know that not every science class is considered a core science for your degree requirement? The same is true when it comes to your history requirement, creative arts requirement, and other core coursework. Check out the core curriculum area of catalog.tamu.edu to see what options are accepted for these areas!

ICD/CD

By the time you graduate, at least one of the courses on your plan needs to have an International and Cultural Diversity (ICD) attribute and one course has to have a Cultural Discourse (CD) attribute. For efficiency, try to choose classes with these attributes when planning classes you already have to do (like your core arts, science, etc.)

CLASSES TO PLAN YOUR SCHEDULE AROUND

AGECE 317 (3 hrs)

Economic Analysis for Agribusiness Management

This class is one of the most complicated to plan since it has a lot of prerequisites, so you should begin your planner around this class. Ideally, this course should happen the semester before you graduate.

***Try to avoid planning ECON 323 and BUSN 203 in the same semester if able**

Capstones (AGECE 414, 431, 440)

Capstones cannot be taken concurrently with their prerequisites and are not available in the summers, so it's important to make sure that things are planned in the right order so that you can graduate on time. FINC 341, MKTG 321, MGMT 363, and AGECE 317 need to be completed before you reach these courses.

Lower-level coursework

AGECE 217, ECON 202, ECON 203, ACCT 229, ACCT 230, BUSN 203

These six classes have to be completed for you to move to upper-level (AGBU) status. Although you can start taking upper level classes concurrently with the prerequisites of AGECE 217, ACCT 230, and BUSN 203, we HIGHLY recommend completing these classes first!

TIPS

How do I show that my writing requirement is met?

AGECE 117 and AGECE 429

Go to the "Edit Plan" tab and select the dropdown box next to these two classes. Pick "UWRT" to indicate that these are your writing intensive courses!

How do I submit my degree planner?

Be sure to click on the "Degree Evaluation" tab, scroll to the end of the page and click on the "Submit" button to send your planner to the advisor for review.

READ YOUR ADVISOR'S COMMENTS

Just because your planner is approved doesn't mean that it is 100% correct! Be sure to click on the advisor comment section after your planner is approved to see if there are any changes that need to be made!

***If you have questions/changes to make to an approved planner, please schedule an advising appointment as opposed to resubmitting the planner**

Degree Planning Tips

AGRICULTURAL ECONOMICS

HINT:
Avoid planning ECON
323 and STAT 303 for
the same term if
possible!

*Degree planners do not guarantee enrollment in planned classes and are not "set in stone"

PLAN "BACKWARDS"

To make sure you are graduating by your planned semester, start with the classes you know will need to be in your final semester and then work backwards to make sure all prerequisites have been met before this final semester. For more info on course prerequisites, check out the AGECE Student Handbook!

UNIVERSITY CORE CURRICULUM

Did you know that not every science class is considered a core science for your degree requirement? The same is true when it comes to your history requirement, creative arts requirement, and other core coursework. Check out the core curriculum area of catalog.tamu.edu to see what options are accepted for these areas!

ICD/CD

By the time you graduate, at least one of the courses on your plan needs to have an International and Cultural Diversity (ICD) attribute and one course has to have a Cultural Discourse (CD) attribute. For efficiency, try to choose classes with these attributes when planning classes you already have to do (like your core arts, science, etc.)

CLASSES TO PLAN YOUR SCHEDULE AROUND

AGECE 317 (3 hrs)

Economic Analysis for Agribusiness Management

This class is one of the most complicated to plan since it has the most prerequisites, so you should begin your planner around this class. Ideally, this course should happen the semester before you graduate.

Dir. AGECE Electives

ANY AGECE class not already specifically required on the degree plan

Although the degree plan notes that these should be selected with an advisor, this isn't really necessary if you know what counts here! This area is a great way to incorporate minor coursework, internship, study abroad, etc. so it's a great idea to get an advisor's feedback on what options are most in line with your interests but you can input these for the planner on your own! For more details, check out the AGECE Handbook!

AGECE 424 (Fall Only)

(AGECE 324 is a substitute for students in the FRE option)

Interested in owning your own business? Check out AGECE 424! If possible, we suggest planning AGECE 324 before taking this course AND we highly recommend no more than 12-13 hrs in a semester with this course!

TIPS

How do I show that my writing requirement is met?

AGECE 117 and AGECE 429

Go to the "Edit Plan" tab and select the dropdown box next to these two classes. Pick "UWRT" to indicate that these are your writing intensive courses!

How do I submit my degree planner?

Be sure to click on the "Degree Evaluation" tab, scroll to the end of the page and click on the "Submit" button to send your planner to the advisor for review.

READ YOUR ADVISOR'S COMMENTS

Just because your planner is approved doesn't mean that it is 100% correct! Be sure to click on the advisor comment section after your planner is approved to see if there are any changes that need to be made!

*If you have questions/changes to make to an approved planner, please schedule an advising appointment as opposed to resubmitting the planner

#atmAgEco

Instagram



Department of Ag Economics
Aggieland

15s



187 likes
having a blast! #atmAgEco



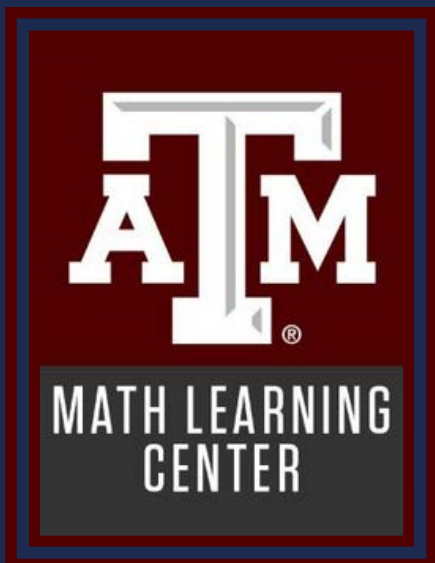
@TAMUAGEC



@TAMUAGEC



@AGECONOMICS
@AGEC_HONORS



DID YOU KNOW THAT TEXAS A&M OFFERS
TUTORING RESOURCES AND SUPPLEMENTAL
INSTRUCTION SESSIONS FOR MANY CLASSES?

THESE RESOURCES ARE COVERED AS A
PART OF YOUR STUDENT FEES, SO BE SURE
TO TAKE ADVANTAGE OF THESE RESOURCES
EARLY IN THE SEMESTER!

WORRIED
ABOUT
GRADES???

CHECK OUT THESE RESOURCES BEFORE YOUR FIRST TEST!

BACHELOR OF SCIENCE IN

AGRIBUSINESS



**According to a
graduation survey
taken in Spring 2019**

**by the Texas A&M
University Career
Center, students
graduating with a
degree in
Agribusiness reported
an average starting
salary of \$55,000,
with the highest
starting salary
reported at \$120,000.**



"I felt that through Agribusiness I would be given the tools and... kind of the armor to go through life and be able to say 'Agriculture is important, and here's why—so please, let's work for a better future together.'"

BAILEY ALLISON '21

Department of Agricultural Economics
For Students Entering Under Catalog 202331 (Fall 2023)
B.S. degree in Agribusiness (AGBL/AGBU)

Name:

UIN#:

Date:

<u>University Core Curriculum</u> <i>https://catalog.tamu.edu/</i>	<u>Major Coursework</u> (22 hrs)	<u>Additional Graduation</u> Requirements for All Students:
<i>Communications (6 hrs)</i>	AGEC 117 (W) 1	<i>To be met through AGBU requirements or electives</i>
ENGL 103 or 104 3	AGEC 317 3	<i>Designated Writing Intensive</i> <i>(2 courses)</i>
Core Comm. 3	AGEC 340 3	AGEC 117 (W) 1
<i>Mathematics (6 hrs)</i>	AGEC 414 3	AGEC 429 (W) 3
MATH 140 3	AGEC 429 (W) 3	<i>International & Cultural</i> <i>Diversity (3 hrs)</i>
MATH 142 3	AGEC 431 3	ICD 3
<i>Life & Physical Science (9 hrs)</i>	ECON 323 3	<i>Cultural Discourse (3 hrs)</i>
Core Sci. 3	AGEC 430 or ECON 311 or 410 3	CD 3
Core Sci. 3		<i>Foreign Language</i>
Core Sci. 3	Supporting Coursework	<i>A minimum of one year (2 semesters) of foreign language is required. This degree requirement can be satisfied by the satisfactory completion in high school of two full years of the same foreign language or one year (2 semesters) of the same language at the college level.</i>
<i>Language, Philosophy & Culture (3 hrs)</i>	<i>Technical Ag Elective</i>	
Core LPC 3	<i>Any College of Ag course not already required of you</i>	
<i>Creative Arts (3 hrs)</i>		
Core Arts 3	<i>International Electives (6 hrs)</i>	
<i>American History & Political Science (12 hrs)</i>	<i>Select from list on next page</i>	
Core Hist. 3		
Core Hist. 3		
POLS 206 3		
POLS 207 3		
<i>Social & Behavioral Science (3 hrs)</i>	Common Body of Knowledge – CBK (37 hrs)	Limitations <small>(see Howdy Degree Evaluation for complete list of degree limitations)</small>
AGEC 105 (Major) 3	<i>A minimum GPA of 2.0.</i>	Limitation At least 25 percent of the credit hours required for an undergraduate degree must be earned through instruction offered by Texas A&M University.
	<i>Transfer grades are not calculated in GPA requirement for CBK</i>	Limitation No more than 50% of courses required for the degree plan can be taken as Distance Education Courses for non-distance degree programs.
General Electives (10 hrs)	ECON 202 3	Limitation Only one of the following will satisfy the requirements for a degree: CHEM 101/CHEM 111, CHEM 107/CHEM 117, and CHEM 119
<i>Select from any 100-499 number course (excluding KINE 198, 199)</i>	ECON 203 3	Limitation Only one of the following will satisfy the requirements for a degree: GENE 301, GENE 302, GENE 315, and GENE 320.
	AGEC 217 3	Limitation Only one of the following will satisfy the requirements for a degree: MATH 131, MATH 142, MATH 147, MATH 151, and MATH 171.
	BUSN 203 3	Limitation Only one of the following will satisfy the requirements for a degree: MATH 140, MATH 141, MATH 166 and MATH 168.
	ACCT 229 3	Limitation Only one of the following will satisfy the requirements for a degree: MATH 148, MATH 152, and MATH 172.
	ACCT 230 3	Limitation Only one of the following will satisfy the requirements for a degree: MATH 221, MATH 251, and MATH 253.
	MGMT 311 3	Limitation Only one of the following will satisfy the requirements for a degree: MATH 304, MATH 309, MATH 311, and MATH 323.
	MGMT 363 3	Limitation Only one of the following will satisfy the requirements for a degree: STAT 201, BUSN 203, STAT 301, STAT 302 and STAT 303. AGEC requires BUSN 203, STAT 303, 302, or 301. STAT 201 is not accepted.
	MKTG 321 3	Limitation Only one hour of KINE 199/198 may be used for degree credit
	FINC 341 3	
	SCMT 364 3	
	AGEC 440 3	
	AGEC 481 1	
	120 Total Degree Hours	

Department of Agricultural Economics
 For Students Entering Under Catalog 202331 (Fall 2023)
B.S. degree in Agribusiness (AGBL/AGBU)
Suggested Semester by Semester Plan

Name: _____

UIN#: _____

Date: _____

FRESHMAN YEAR: FALL	HRS
AGEC 105 (Major)	3
ENGL 103 or 104	3
MATH 140	3
AMERICAN HISTORY	3
LIFE & PHYSICAL SCIENCE	3
AGEC 101	0
	15

FRESHMAN YEAR: SPRING	HRS
MATH 142 or 131 or 151	3
AMERICAN HISTORY	3
AGEC 117 [W]	1
LANGUAGE, PHILOSOPHY & CULTURE	3
LIFE & PHYSICAL SCIENCE	3
CREATIVE ARTS	3
	16

SOPHOMORE YEAR: FALL	HRS
ACCT 229 (CBK)	3
ECON 202 (CBK)	3
AGEC 217 (CBK)	3
POLS 206 or POLS 207	3
LIFE & PHYSICAL SCIENCE	3
	15

SOPHOMORE YEAR: SPRING	HRS
ACCT 230 (CBK)	3
BUSN 203 (CBK)	3
ECON 203 (CBK)	3
POLS 206 or POLS 207	3
COMMUNICATIONS	3
	15

JUNIOR YEAR: FALL	HRS
AGEC 340 (Major)	3
FINC 341 (CBK)	3
MGMT 311 (CBK)	3
DIRECTED INTERNATIONAL ELECTIVE	3
ECON 323 (Major)	3
	15

JUNIOR YEAR: SPRING	HRS
AGEC 317 (Major)	3
AGEC 429 (Major) [W]	3
SCMT 364 (CBK)	3
MKTG 321 (CBK)	3
DIRECTED INTERNATIONAL ELECTIVE	3
	15

SENIOR YEAR: FALL	HRS
AGEC 431 (Major) [Capstone]	3
AGEC 481 (CBK)	1
MGMT 363 (CBK)	3
TECHNICAL AG ELECTIVE	3
GENERAL ELECTIVE	4
	14

SENIOR YEAR: SPRING	HRS
AGEC 414 (Major) [Capstone]	3
AGEC 440 (CBK) [Capstone]	3
AGEC 430 or ECON 311 (Major)	3
GENERAL ELECTIVE	3
GENERAL ELECTIVE	3
	15

ICD _____
 Foreign Language _____

CD _____

Agribusiness Core Business Knowledge (CBK) Courses

Lower-Level CBK Courses

ACCT 229
ACCT 230
AGEC 217*
ECON 202
ECON 203
BUSN 203

Upper-Level CBK Courses

AGEC 440
AGEC 481
FINC 341
MGMT 363
MKTG 321
MGMT 311
SCMT 364

Did you know that the Agribusiness degree is a 2-level program? Students are admitted as lower-level (AGBL) students and will become upper-level (AGBU) after fulfilling a specific list of requirements.

Students must complete 60 total hours of coursework and all of the classes on the list of lower-level CBK courses before being able to become an upper-level student. Please note that students **cannot** take any upper-level CBK classes until after these requirements have been met.

*AGEC 217 has several prerequisites

TIP:

While it's important to complete your CBK coursework in a timely manner, it's a good idea to avoid taking more than 2-3 in a single semester to help balance your courseload (if possible, since this is based on when you plan to graduate). Some classes also allow you to register after taking only 1-2 prerequisites, but that doesn't necessarily mean that taking them in freshman or sophomore year is a good idea. Be sure to check with your academic advisor to make sure that you are staying on track with your CBK coursework progress!

International Electives

ACCT 430 Global Immersion in Accounting (cross-listed as IBUS 400)

ACCT 445* International Accounting

AGEC 452* International Trade and Agriculture

AGEC 453* International Agribusiness Marketing

ALEC 350 Global Agricultural Issues

ANTH 205* People and Cultures of the World

ANTH 300 Cultural Change and Development

ANTH 324 Music in World Cultures (cross-listed as PERF 324)

ARCH 458* Cultural and Ethical Considerations for Global Practice

ASIA 352 Modern East Asia (cross-listed as HIST 352)

ASIA 356 Twentieth Century Japan (cross-listed as HIST 356)

COMM 335* Intercultural Communication

ECON 320 Economic Development of Europe

ECON 330 Economic Development

ECON 452* International Trade Theory and Policy

EURO 443 Contemporary Russian Prose

EURO 444 Russian Drama

EURO 447 Russian Artistic Culture II: 1980 to Present

FILM 215 Global Cinema (cross-listed as INTS 215)

FILM 435 German Film (cross-listed as GERM 435)

FINC 445* International Finance

FREN 301* French Culture and Civilization

FREN 322* Survey of French Literature II

FREN 336* Contemporary France

GEOG 202* Geography of the Global Village

GEOG 311 Cultural Geography

GEOG 320 The Middle East

GEOG 323* Geography of Latin America

GEOG 325* Geography of Europe

GEOG 327* Geography of South Asia

GERM 322* German Culture and Civilization II

GERM 435 German Film (cross-listed as FILM 435)

HIST 210 Russian Civilization

HIST 342 Latin America Since 1810

HIST 345 Modern Africa

HIST 346 History of South Africa

HIST 348 Modern Middle East

HIST 352* Modern East Asia

HIST 356 Twentieth Century Japan

HIST 402 Germany Since 1815

HIST 407 History of France Since 1815

HIST 412* Soviet Union 1917 - Present

HIST 439 Twentieth Century England

HIST 441 History of Mexico 1821 - Present

HIST 449 History of Brazil 1822 - Present

HIST 464 International Development Since 1918

HIST 447* Women in Modern European History

HUMA 321 Political Islam and Jihad (cross-listed as INTS 321/RELS 231)

IBUS 401 Global Marketing

IBUS 402* International Marketing (cross-listed as MKTG 402)

IBUS 403* International Market Entry Strategies (cross-listed as MKTG 403)

IBUS 430 Global Immersion in Accounting (cross-listed as ACCT 430)

IBUS 445* International Accounting (cross-listed as ACCT 445)

IBUS 446* International Finance (cross-listed as FINC 445)

IBUS 450* Int. Environment of Business (cross-listed as MGMT 450)

IBUS 452* International Management (cross-listed MGMT 452)

IBUS 453* Emerging Economics: Brazil, Russia, India, China (cross-listed as MGMT 453)

IBUS 455* Asian Business Environment

IBUS 456* European Integration and Business

IBUS 457* Global Entrepreneurship

IBUS 458 International Negotiations

IBUS 459* Latin American Markets

INTS 215 Global Cinema (cross-listed as FILM 215)

INTS 301 Theories of Globalization

INTS 321 Political Islam and Jihad (cross-listed as HUMA/RELS 231)

ITAL 456 Contemporary Italian Cultures

MGMT 450* International Environment of Business

MGMT 452* International Management

MGMT 453* Emerging Economics: Brazil, Russia, India, China

MGMT 457* Global Entrepreneurship

MKTG 401 Global Marketing

MKTG 402* International Marketing

MKTG 403* International Marketing Entry Strategies

POLS 229 Introduction to Comparative Politics

POLS 231 Introduction to World Politics

POLS 322 Western European Government and Politics

POLS 323 Political Systems of Latin America

POLS 324 Third World Politics

POLS 326 Government and politics of Eastern Europe

POLS 328 Globalization and Democracy

POLS 338 Government and Politics of Former Soviet Union

POLS 365 Asian Governments and Politics

POLS 432 Politics of the European Union

SOCI 329 Pacific Rim Business Behavior

SOCI 423 Globalization and Social Change

SPAN 312 Hispanic Culture and Civilization 18th Century to Present

SPAN 320 Introduction to Hispanic Literature

SPAN 410 Hispanic Film

SPAN 411 Contemporary Hispanic Society and Culture

SPAN 450 Contemporary Spanish and Spanish American Literature

SPMT 337* International Sports Business

Notes

- Major restrictions and prerequisites for courses may change. Although all of the listed courses are accepted towards the International Electives requirement, this does not guarantee that students will be able to take every course. Students should check to see if there are any prerequisites for the courses listed before registering.
- Courses in bold font require upper-level status and additional prerequisites
- Starred courses also have IGD attributes
- Technical Ag Electives
 - Select a class from the following departments in the College of Agriculture and Life Sciences
 - Agricultural Leadership Education & Communications
 - Animal Science
 - Biochemistry & Biophysics
 - Biological & Agricultural Engineering
 - Ecosystem Science & Management
 - Entomology
 - Food Science & Technology
 - Horticultural Sciences
 - Nutrition
 - Plant Pathology & Microbiology
 - Poultry Science
 - Recreation, Park & Tourism Sciences
 - Soil & Crop Science
 - Wildlife & Fisheries Sciences

BACHELOR OF SCIENCE IN

AGRICULTURAL ECONOMICS



Based on a survey taken in Fall 2019 by the Texas A&M University Career Center, students graduating with a degree in Agricultural Economics reported an average starting salary of \$53,850, with the highest starting salary reported at \$100,000.



"[One] thing that really drew my eye to this department is just how successful the students are."

SHELBY LEPLY '21

**FOR STUDENTS
INTERESTED IN:**

- BANKING
- REAL ESTATE
 - LENDING
 - REAL ESTATE APPRAISAL
 - REAL ESTATE INVESTMENT
 - DEVELOPMENT
 - BROKERAGE

CAREER OPTIONS:

- CREDIT ANALYST
- BANK BRANCH MANAGER
- FINANCIAL ANALYST
- ACTUARY
- PORTFOLIO MANAGER
- INSURANCE UNDERWRITER
- REAL ESTATE APPRAISER
- HEDGE FUND PRINCIPAL/TRADER
- LOAN OR TRUST OFFICER
- INVESTOR RELATIONS OFFICER
- INSURANCE AGENT/BROKER
- ADJUSTER
- INVESTMENT ADVISOR
- MUTUAL FUND ANALYST

FRE

FINANCE AND REAL ESTATE



Date:

25

Department of Agricultural Economics
For Students Entering Under Catalog 202331 (Fall 2023)
B.S. degree in Agricultural Economics – Finance and Real Estate (FRE)
Suggested Semester by Semester Plan

Name: _____

UIN#: _____

Date: _____

FRESHMAN YEAR: FALL	HRS
AGEC 105	3
AGLS 101	1
ENGL 103 or 104	3
MATH 140	3
AMERICAN HISTORY	3
TECHNICAL AG ELECTIVE	3
AGEC 101 (FYE)	0
	16

FRESHMAN YEAR: SPRING	HRS
MATH 142	3
AMERICAN HISTORY	3
AGEC 117 [W]	1
LANGUAGE, PHILOSOPHY & CULTURE	3
LIFE & PHYSICAL SCIENCE	3
CREATIVE ARTS	3
	16

SOPHOMORE YEAR: FALL	HRS
ACCT 209 or 229	3
AGEC 217	3
ECON 202	3
POLS 206 or POLS 207	3
LIFE & PHYSICAL SCIENCE	3
	15

SOPHOMORE YEAR: SPRING	HRS
ACCT 210 or 230	3
ECON 203	3
POLS 206 or POLS 207	3
COMMUNICATIONS	3
LIFE & PHYSICAL SCIENCE	3
	15

JUNIOR YEAR: FALL	HRS
AGEC 330	3
AGEC 340	3
AGEC 429 [W]	3
STAT 303	3
DIRECTED NON-AGEC ELECTIVE	3
	15

JUNIOR YEAR: SPRING	HRS
ECON 323	3
AGEC 314	3
AGEC 422	3
DIRECTED AGECE ELECTIVE	3
GENERAL ELECTIVE	3
	15

SENIOR YEAR: FALL	HRS
AGEC 317	3
AGEC 424 or AGECE 324	3
DIRECTED NON-AGECE ELECTIVE	3
GENERAL ELECTIVE	3
	12

SENIOR YEAR: SPRING	HRS
AGECE 430/ECON 311	3
AGECE 432/434 or AGECE/AGLS 435	3
DIRECTED AGECE ELECTIVE	3
DIRECTED AGECE ELECTIVE	3
GENERAL ELECTIVE	3
AGECE 481	1
	16

ICD _____

CD _____

Foreign Language _____

Directed Non-AGEC Electives List Finance & Real Estate (FRE)

Notes

AGCJ 306	Theory & Practice of Agricultural Public Relations*
AGCJ 406	Agricultural Public Relations Methods**
AGSM 301	Systems Analysis in Agriculture*
AGSM 335	Water and Soil Management *
AGSM 337	Tech. for Env. And Natural Resource Engineering*
AGSM 260	Occupational Safety Management
COMM 210	Group Communication and Discussion
COMM 215	Interviewing: Principles and Practice
COMM 289	Special Topics in... **
COMM 320	Organizational Communication
COMM 335	Intercultural Communication
COMM 443	Communication and Conflict
COMM 450	Media Campaigns
COMM 489	Special Topics in...
COSC 153	Introduction to the Construction Industry
COSC 253	Construction Materials and Methods I
COSC 254	Construction Materials and Methods II*
ECON 412	Public Finance*
ECON 414	Health Economics*
ECON 433	Energy Markets and Policy*
ECON 445	Financial Economics*
EHRD 372	Training & Development in Human Resource Devel.*
EHRD 374	Organizational Development*
EHRD 405	Principles & Practices of Leadership in HR Devel.
EHRD 408	Globalization and Diversity in the Workplace
EHRD 477	Project Management in Organizations
ENGR 101	Energy: Resources, Utilization & Importance to Society
ESSM 301	Wildland Watershed Management
ESSM 305	Watershed Analysis and Planning
ESSM 416	Fire Ecology and Natural Resources Management*
ESSM 444	Remote Sensing of the Environment
FINC 409	Survey of Finance Principles
GEOG 304	Economic Geography
GEOG 306	Introduction to Urban Geography
GEOG 309	Geography of Energy
GEOG 311	Cultural Geography
GEOG 330	Resources and the Environment
GEOG 370	Coastal Processes
GEOG 404	Spatial Thinking, Perception, and Behavior
GEOG 434	Hydrology and Environment*
GEOS 105	Introduction to Environmental Geosciences
HIST 360	History of Energy in America
MGMT 105	Introduction to Business
MGMT 209	Business Government and Society
MGMT 309	Survey of Management
MKTG 409	Principles of Marketing
RENr 375	Conservation of Natural Resources
RENr 470	Environmental Impact Assessment
SCSC 301	Soil Science (4 hrs.)
SCSC 302	Recreational Turf
SCSC 428	Advanced Turf Ecology and Physiology**
SCSC 429	Turf Management Systems (4 hrs.)*
SCSC 430	Turfgrass Maintenance (4 hrs.) *
SCSC 455	Environmental Soil and Water Science*
SOCI 328	Environmental Sociology*
SOCI 329	Pacific Rim Business Behavior
SOCI 335	Sociology of Organizations
SPMT 337	International Sport Business
URPN 202	Building Better Cities
URPN 330	Land Development I**

- Major restrictions and prerequisites for courses may change. Although a course is listed, this does not guarantee that students are able to register. *Students should check to see if there are any prerequisites for the courses listed before registering.*
- Directed AGECElective
 - o Any AGECE course that is not already listed as a required course on a student's degree plan
- Technical Ag Electives
Select a class from the following departments in the College of Agriculture and Life Sciences
 - Agricultural Leadership Education & Communications
 - Animal Science
 - Biochemistry & Biophysics
 - Biological & Agricultural Engineering
 - Ecosystem Science & Management
 - Entomology
 - Food Science & Technology
 - Horticultural Sciences
 - Nutrition
 - Plant Pathology & Microbiology
 - Poultry Science
 - Recreation, Park & Tourism Sciences
 - Soil & Crop Science
 - Wildlife & Fisheries Sciences
- Directed Non-AGECElectives
Select from list to the left or visit with your advisor to discuss using minor coursework, internship credit, or study abroad classes for this requirement.
Real Estate courses offered at Blinn College may be used as Directed Non-AGECElectives for the Finance and Real Estate Option. Please contact an AGECE Academic Advisor for a list of approved RELE courses.
- AGECE 105 (required major coursework) also meets University Core Curriculum Social and Behavioral Science requirement.

*Prerequisite courses

**Other Restrictions. Please check with an advisor.

**FOR STUDENTS
INTERESTED IN:**

- FOOD MARKETING
- SALES SECTOR OF FOOD SUPPLY INDUSTRY
- FOOD PRODUCT
 - DEVELOPMENT
 - ADVERTISING
 - DISTRIBUTION
 - SALES

CAREER OPTIONS:

- BUYER
- MARKET ECONOMIST
- COMMODITIES TRADER
- COST ANALYST
- LOGISTICS MANAGER
- EXPORT COMPLIANCE MANAGER
- BRAND MANAGER
- PURCHASING AGENT
- OPERATIONS MANAGER
- PRODUCTION LINE MANAGER
- FOREIGN TRADE ANALYST
- EVENT MANAGER
- DISTRIBUTION MANAGER
- FLOOR BROKER



Department of Agricultural Economics
For Students Entering Under Catalog 202331 (Fall 2023)
B.S. degree in Agricultural Economics – Food Marketing Systems (FMS)

Name:

UTIN#:

Date:

<u>University Core Curriculum</u> <i>https://catalog.tamu.edu/</i>	<u>Major Coursework</u>	<u>Additional Graduation Requirements for All Students:</u>
<i>Communications (6 hrs)</i>	<i>AGEC – Food Marketing Systems (44 hrs)</i>	<i>To be met through AGEC requirements or electives</i>
ENGL 103 or 104	AGEC 105	<i>Designated Writing Intensive (2 courses)</i>
Core Comm.	AGEC 117 (W)	AGEC 117 (W)
<i>Mathematics (9 hrs)</i>	AGEC 217	AGEC 429 (W)
STAT 303	AGEC 314	<i>International & Cultural Diversity (3 hours)</i>
MATH 140	AGEC 315	ICD
MATH 142	AGEC 317	<i>Cultural Discourse (3 hours)</i>
<i>Life & Physical Science (9 hrs)</i>	AGEC 330	CD
Core Sci.	AGEC 340	<i>Foreign Language</i>
Core Sci.	AGEC 429 (W)	<i>A minimum of one year (2 semesters) of foreign language is required. This degree requirement can be satisfied by the satisfactory completion in high school of two full years of the same foreign language or one year (2 semesters) of the same language at the college level.</i>
Core Sci.	AGEC 481	
<i>Language, Philosophy & Culture (3 hrs)</i>	AGEC 452 or 453	
Core LPC	AGEC 447 or 448	
<i>Creative Arts (3 hrs)</i>	<i>Directed AGEC Electives (9 hrs)</i>	
Core Arts	<i>Any AGEC course not already required of you</i>	
<i>American History & Political Science (12 hrs)</i>		
Core Hist.		
Core Hist.		
POLS 206		
POLS 207		
General Electives (9 hrs)	AGEC 430 or ECON 311	Limitations <small>(see How to Degree Evaluation for complete list of degree limitations)</small>
<i>Select from any course not used elsewhere (except KINE 198-199)</i>	Supporting Coursework	Limitation At least 25 percent of the credit hours required for an undergraduate degree must be earned through instruction offered by Texas A&M University.
	AGLS 101	Limitation No more than 50% of courses required for the degree plan can be taken as Distance Education Courses for non-distance degree programs.
	<i>Technical Ag Elective</i>	Limitation Only one of the following will satisfy the requirements for a degree: CHEM 101/CHEM 111, CHEM 107/CHEM 117, and CHEM 119
	<i>Any College of Ag course not already required of you</i>	Limitation Only one of the following will satisfy the requirements for a degree: GENE 301, GENE 302, GENE 315, and GENE 320.
		Limitation Only one of the following will satisfy the requirements for a degree: MATH 131, MATH 142, MATH 147, MATH 151, and MATH 171.
	ECON 202	Limitation Only one of the following will satisfy the requirements for a degree: MATH 140, MATH 141, MATH 166 and MATH 168.
	ECON 203	Limitation Only one of the following will satisfy the requirements for a degree: MATH 148, MATH 152, and MATH 172.
	ACCT 209	Limitation Only one of the following will satisfy the requirements for a degree: MATH 221, MATH 251, and MATH 253.
	ACCT 210	Limitation Only one of the following will satisfy the requirements for a degree: MATH 304, MATH 309, MATH 311, and MATH 323.
	ECON 323	Limitation Only one of the following will satisfy the requirements for a degree: BUSN 203, STAT 201, STAT 301, STAT 302 and STAT 303. AGEC requires STAT 303, 302, or 301. STAT 201 is not accepted.
Directed Non-AGEC Electives (6 hrs)	120 Total Degree Hours	
<i>Select from list of Food Marketing Systems directed non-AGEC electives. See next page.</i>		

Department of Agricultural Economics
For Students Entering Under Catalog 202331 (Fall 2023)
B.S. degree in Agricultural Economics – Food Marketing Systems (FMS)
Suggested Semester by Semester Plan

Name: _____

UIN#: _____

Date: _____

FRESHMAN YEAR: FALL	HRS
AGEC 105	3
AGLS 101	1
ENGL 103 or 104	3
MATH 140	3
AMERICAN HISTORY	3
TECHNICAL AG ELECTIVE	3
AGEC 101 (FYE)	0
	16

FRESHMAN YEAR: SPRING	HRS
MATH 142	3
AGEC 117 [W]	1
AMERICAN HISTORY	3
LANGUAGE, PHILOSOPHY & CULTURE	3
LIFE & PHYSICAL SCIENCE	3
CREATIVE ARTS	3
	16

SOPHOMORE YEAR: FALL	HRS
ACCT 209 or 229	3
AGEC 217	3
ECON 202	3
POLS 206 or POLS 207	3
LIFE & PHYSICAL SCIENCE	3
	15

SOPHOMORE YEAR: SPRING	HRS
ACCT 210 or 230	3
ECON 203	3
POLS 206 or POLS 207	3
COMMUNICATIONS	3
LIFE & PHYSICAL SCIENCE	3
	15

JUNIOR YEAR: FALL	HRS
AGEC 314	3
AGEC 315	3
DIRECTED AGEC ELECTIVE	3
STAT 303	3
DIRECTED NON-AGEC ELECTIVE	3
	15

JUNIOR YEAR: SPRING	HRS
ECON 323	3
AGEC 330	3
AGEC 340	3
AGEC 481	1
DIRECTED AGEC ELECTIVE	3
GENERAL ELECTIVE	3
	16

SENIOR YEAR: FALL	HRS
AGEC 429 [W]	3
AGEC 452 OR AGEC 453	3
AGEC 317	3
DIRECTED AGEC ELECTIVE	3
GENERAL ELECTIVE	3
	15

SENIOR YEAR: SPRING	HRS
AGEC 430/ECON 311	3
AGEC 447 or AGEC 448	3
DIRECTED NON-AGEC ELECTIVE	3
GENERAL ELECTIVE	3
	12

ICD _____

CD _____

Foreign Language _____

Directed Non-AGEC Electives List Food Marketing Systems (FMS)

Notes

AGCJ 105	Introduction to Agricultural Communications
AGCJ 305	Theory and Practice of Ag Publishing*
AGCJ 306	Theory & Practice of Agricultural Public Relations*
AGCJ 406	Agricultural Public Relations Methods**
AGSM 301	Systems Analysis in Agriculture*
ANSC 302	Basic Beef Cattle Production*
ANSC 307	Meats*
ANSC 317	Meat Selection, Eval. And Grading (2 hrs.)*
ANSC 337	Meat Merchandising (2 hrs.)*
ANSC 402	Exploring Animal Industries (2 hrs.)
ANSC 437	Marketing and Grading of Livestock and Meats
ANSC 439	Feedlot Risk Management (2 hrs.)
COMM 210	Group Communication and Discussion
COMM 215	Interviewing: Principles and Practice
COMM 250	New Media and Independent Voice
COMM 320	Organizational Communication
COMM 335	Intercultural Communication
COMM 365	International Communication
COMM 450	Media Campaigns
ECON 425	The Organization of Industry*
ECON 426	Economics of Antitrust and Regulation*
ECON 452	International Trade Theory and Policy*
EHRD 372	Training & Development in Human Resource Devel.*
EHRD 405	Principles & Practices of Leadership in HR Devel.
EHRD 408	Globalization and Diversity in the Workplace
EHRD 477	Project Management in Organizations
ENTO 322	Insects and Human Society
ENTO 402	Field-Crop Insects*
FINC 409	Survey of Finance Principles
GEOG 304	Economic Geography
GEOG 330	Resources and the Environment
HORT 319	Fruit and Nut Production*
HORT 325	Vegetable Crop Production
HORT 418	Nut Culture*
HORT 419	Viticulture and Small Fruit Culture*
HORT 420	Concepts in Wine Production*
HORT 421	Enology**
HORT 426	International Floriculture Marketing*
HORT 429	Floriculture Crop Production*
HORT 431	Nursery Production and Management
HORT 451	Retail Floristry*
HORT 452	Floral Design: Weddings and Personal Flowers*
HORT 454	Special Event Design and Production (2 hrs.)
MGMT 105	Introduction to Business
MGMT 209	Business Government and Society
MGMT 309	Survey of Management
MKTG 409	Principles of Marketing
NFSC 201	Food Science
NFSC 202	Fundamentals of Human Nutrition
NFSC 300	Religious and Ethnic Foods
NFSC 307	Meats*
NFSC 311	Principles of Food Processing*
NFSC 326	Food Bacteriology
NFSC 330	Dairy and Food Tech (4 hrs.)
NFSC 331	Dairy and Food Tech. (4 hrs.)*
NFSC 446	Comm. Fruit and Veg. Processing*
NFSC 457	Hazard Analysis and Crit. Control Pt. System*
RPTS 302	Application of Tourism Principles
RPTS 311	Planning and Implementing Events and Programs
RPTS 320	Event Management and Operations I*
RPTS 321	Event management and Operations II*
RPTS 331	Tourism Marketing*
RPTS 401	Tourism and Recreation Enterprises*
RPTS 403	Financing and Marketing RPTS Resources*
SOCI 329	Pacific Rim Business Behavior
SOCI 335	Sociology of Organizations
SPMT 337	International Sport Business

- Major restrictions and prerequisites for courses may change. Although a course is listed, this does not guarantee that students are able to register. *Students should check to see if there are any prerequisites for the courses listed before registering.*
- Directed AGECElective
 - o Any AGECE course that is not already listed as a required course on a student's degree plan
- Technical Ag Electives
 - o Select a class from the following departments in the College of Ag
 - Agricultural Leadership Education & Communications
 - Animal Science
 - Biochemistry & Biophysics
 - Biological & Agricultural Engineering
 - Ecosystem Science & Management
 - Entomology
 - Food Science & Technology
 - Horticultural Sciences
 - Nutrition
 - Plant Pathology & Microbiology
 - Poultry Science
 - Recreation, Park & Tourism Sciences
 - Soil & Crop Science
 - Wildlife & Fisheries Sciences
- Directed Non-AGECElectives
Select from list to the left or visit with your advisor to discuss using minor coursework, internship credit, or study abroad classes for this requirement.
- AGECE 105 (required major coursework) also meets University Core Curriculum Social and Behavioral Science requirement.

***Prerequisite courses**

****Other Restrictions. Please check with an advisor**

FOR STUDENTS INTERESTED IN:

- GRADUATE DEGREES
- LAW DEGREES
- CAREERS IN LOCAL,
STATE, AND FEDERAL
GOVERNMENT
- EXTENSION
- POLICY

CAREER OPTIONS:

- ECONOMIC AFFAIRS
ANALYST
- LEGISLATIVE ASSISTANT
- PROJECT COORDINATOR
- ECONOMIC ANALYST
- MARKET RESEARCH
ANALYST
- BUDGET OFFICER
- PRICING ANALYST
- STRATEGIC PLANNER
- POLICY ANALYST
- OPERATIONS ANALYST

PEA

POLICY AND ECONOMIC ANALYSIS



B.S. degree in Agricultural Economics – Policy and Economic Analysis (PEA)

Date:

33

Department of Agricultural Economics
For Students Entering Under Catalog 202331 (Fall 2023)
B.S. degree in Agricultural Economics – Policy and Economic Analysis (PEA)
Suggested Semester by Semester Plan

Name: _____

UTN#: _____

Date: _____

FRESHMAN YEAR: FALL	HRS
AGEC 105	3
AGLS 101	1
ENGL 103 or 104	3
MATH 140	3
AMERICAN HISTORY	3
TECHNICAL AG ELECTIVE	3
AGEC 101 (FYE)	0
	16

FRESHMAN YEAR: SPRING	HRS
MATH 142	3
AMERICAN HISTORY	3
LANGUAGE, PHILOSOPHY & CULTURE	3
AGEC 117 [W]	1
LIFE & PHYSICAL SCIENCES	3
CREATIVE ARTS	3
	16

SOPHOMORE YEAR: FALL	HRS
ACCT 209 or 229	3
AGEC 217	3
ECON 202	3
POLS 206 or 207	3
LIFE & PHYSICAL SCIENCES	3
	15

SOPHOMORE YEAR: SPRING	HRS
ACCT 210 or 230	3
ECON 203	3
POLS 206 or 207	3
COMMUNICATIONS	3
LIFE & PHYSICAL SCIENCES	3
	15

JUNIOR YEAR: FALL	HRS
AGEC 314	3
AGEC 340	3
AGEC 350	3
STAT 303	3
DIRECTED NON-AGEC ELECTIVE	3
	15

JUNIOR YEAR: SPRING	HRS
ECON 323	3
AGEC 330	3
DIRECTED NON-AGEC ELECTIVE	3
DIRECTED AGEC ELECTIVE	3
GENERAL ELECTIVE	3
	15

SENIOR YEAR: FALL	HRS
AGEC 344 or AGEC 452	3
AGEC 317	3
DIRECTED AGEC ELECTIVE	3
AGEC 429 [W]	3
GENERAL ELECTIVE	3
	15

SENIOR YEAR: SPRING	HRS
AGEC 448	3
AGEC 430 or ECON 311	3
AGEC 481	1
DIRECTED AGEC ELECTIVE	3
GENERAL ELECTIVE	3
	13

ICD _____

CD _____

Foreign Language _____

Directed Non-AGEC Electives List Policy and Economic Analysis

AFST 317	Racial and Ethnic Relations
AGCJ 105	Introduction to Agricultural Communications
AGCJ 281	Journalism Concepts for Agriculture*
AGCJ 306	Theory & Practice of Agricultural Public Relations*
AGCJ 404	Communication Ag Info. to the Public
AGCJ 406	Agricultural Public Relations Methods**
AGSM 301	Systems Analysis in Agriculture
AGSM 335	Water and Soil Management*
AGSM 337	Technology for Env. And Natural Res. Engr.*
AGSM 355	Energy and Conversion System
AGSM 360	Occupational Safety Management
AGSM 489	Special Topics In...
ALED 400	Public Leadership Development
BESC 201	Introduction to Bioenvironmental Science
BESC 357	Biotechnology for Biofuels and Bio-Products*
BESC 367	U.S. Environmental Regulations*
COMM 307	Mass Comm, Law and Society
COMM 354	Political Economy of Telecommunication
COMM 443	Communication and Conflict
ECMT 461	Economic Data Analysis*
ECMT 463	Introduction to Econometrics*
ECMT 475	Economic Forecasting*
ECON 315	Sports Economics*
ECON 420	Law and Economics*
ECON 426	Economics of Antitrust and Regulation*
ECON 433	Energy Markets and Policy*
ESSM 301	Wildland Watershed Management
ESSM 305	Watershed Analysis and Planning
ESSM 314	Princ. of Rangeland Mgmt. Around the World
ESSM 406	Natural Resources Policy
ESSM 416	Fire Ecology and Natural Resources Mgmt.*
FIVS 123	Forensic Investigations
FIVS 205	Intro to Forensic and Investigative Sciences
GEOG 304	Economic Geography
GEOG 306	Introduction to Urban Geography
GEOG 309	Geography of Energy
GEOG 311	Cultural Geography
GEOG 320	The Middle East
GEOG 330	Resources and the Environment
GEOG 360	Natural Hazards*
GEOG 370	Coastal Processes
GEOG 401	Political Geography
GEOG 404	Spatial Thinking, Perception and Behavior
GEOG 420	Geography of Terrorism
GEOG 430	Environmental Justice*
GEOG 434	Hydrology and Environment*
GEOG 442	Past Climates*
GEOS 105	Introduction to Environmental Geosciences
GEOS 410	Global Change
GEOS 430	Global Science and Policy Making
GEOS 444	The Science and Politics of Global Climate Change*
HIST 319	US Immigration and Ethnicity
HIST 343	Inter-American Relations
HIST 348	Modern Middle East
HIST 359	American Environmental History
HIST 360	History of Energy in America
HIST 447	Law and Society in the United States
HIST 463	American Foreign Relations
HIST 464	International Development Since 1918
INST 251	Contemporary Issues in the Middle East
MGMT 209	Business Government and Society
MGMT 309	Survey of Management
MKTG 409	Principles of Marketing
NFSC 444	Fundamentals of Food Law*
PHIL 314	Environmental Ethics
PHIL 334	Philosophy of Law
POLS 229	Introduction of Comparative Politics

POLS 313	Public Opinion
POLS 314	Interest Groups
POLS 317	Women in Politics
POLS 324	Politics of Global Inequality
POLS 327	Congressional Politics
POLS 328	Globalization and Democracy
POLS 340	Introduction to Public Administration
POLS 347	Politics of Energy and the Environment
POLS 353	Constitutional Rights and Liberties
POLS 355	United States Constitutional Development
POLS 357	National Judicial Politics*
POLS 364	Global Political Thought
POLS 412	International Political Economy
POLS 413	American Foreign Policy
POLS 415	Contemporary Issues in American Foreign Policy
POLS 439	Foreign Policy Decision Making*
POLS 440	Public Policies and Policymaking
POLS 447	National Security Policy
POLS 461	Jurisprudence
POLS 462	Women and the Law
POLS 475	Government and the Economy
POLS 489	Special Topics In...
PSYC 354	Conflict and Negotiation
SOCI 304	Criminology
SOCI 328	Environmental Sociology*
SOCI 329	Pacific Rim Business Behavior
SOCI 445	Sociology of Law
SPMT 421	Legal Aspects of Sport**
URPN 360	Issues in Environmental Discrimination Law
WFSC 303	Fish and Wildlife Laws and Administration*
WGST 430	Employment Discrimination Law
WGST 462	Women and the Law

Notes

- Major restrictions and prerequisites for courses may change. Although a course is listed, this does not guarantee that students are able to register. *Students should check to see if there are any prerequisites for the courses listed before registering.*
- Directed AGECE Elective
 - Any AGECE course that is not already listed as a required course on a student's degree plan
- Technical Ag Electives
Select a class from the following departments in the College of Agriculture and Life Sciences
 - Agricultural Leadership Education & Communications
 - Animal Science
 - Biochemistry & Biophysics
 - Biological & Agricultural Engineering
 - Ecosystem Science & Management
 - Entomology
 - Food Science & Technology
 - Horticultural Sciences
 - Nutrition
 - Plant Pathology & Microbiology
 - Poultry Science
 - Recreation, Park & Tourism Sciences
 - Soil & Crop Science
 - Wildlife & Fisheries Sciences
- Directed Non-AGECE Electives
Select from list to the left or visit with your advisor to discuss using minor coursework, internship credit, or study abroad classes for this requirement.
- AGECE 105 (required major coursework) also meets University Core Curriculum Social and Behavioral Science requirement.

*Prerequisite courses

**Other Restrictions. Please check with an advisor.

**FOR STUDENTS
INTERESTED IN:**

- OWNING THEIR OWN BUSINESS
- MANAGING OR LENDING TO INNOVATIVE BUSINESS

**EXAMPLES OF PAST
BUSINESSES CREATED BY
STUDENTS HAVE INCLUDED:**

- RESTAURANTS
- EQUINE BOARDING
- COW/CALF OPERATIONS
- MOVIE THEATERS
- WEDDING/EVENT
MANAGEMENT
- COFFEE SHOPS
- VINEYARDS
- AND MORE!

CAREER OPTIONS:

- LENDING
- MANAGEMENT
- ECONOMICS FORECASTER
- HUMAN RESOURCES
- PROFESSIONAL FARM/RANCH
MANAGER
- BUSINESS CONSULTANT
- EXTENSION AGENT
- USDA INSPECTOR
- BUSINESS OWNER



RUE
**RURAL
ENTREPRENEURSHIP**



Department of Agricultural Economics
For Students Entering Under Catalog 202331 (Fall 2023)
B.S. degree in Agricultural Economics – Rural Entrepreneurship (RUE)

Name:

UIN#:

Date:

<u>University Core Curriculum</u> <i>https://catalog.tamu.edu/</i>	<u>Major Coursework</u>	<u>Additional Graduation Requirements for All Students:</u>
<i>Communications (6 hrs)</i>	<i>AGEC – Rural Entrepreneurship (44 hrs)</i>	<i>To be met through AGEC requirements or electives</i>
ENGL 103 or 104	AGEC 105	<i>Designated Writing Intensive (2 courses)</i>
Core Comm.	AGEC 117 (W)	AGEC 117 (W)
<i>Mathematics (9 hrs)</i>	AGEC 217	AGEC 429 (W)
STAT 303	AGEC 314	<i>International & Cultural Diversity (3 hours)</i>
MATH 140	AGEC 317	ICD
MATH 142	AGEC 330	<i>Cultural Discourse (3 hours)</i>
<i>Life & Physical Science (9 hrs)</i>	AGEC 340	CD
Core Sci.	AGEC 344	<i>Foreign Language</i>
Core Sci.	AGEC 424	<i>A minimum of one year (2 semesters) of foreign language is required. This degree requirement can be satisfied by the satisfactory completion in high school of two full years of the same foreign language or one year (2 semesters) of the same language at the college level.</i>
Core Sci.	AGEC 425	
<i>Language, Philosophy & Culture (3 hrs)</i>	AGEC 429 (W)	
Core LPC	AGEC 481	
<i>Creative Arts (3 hrs)</i>	<i>Directed AGEC Electives (9 hrs)</i>	
Core Arts	<i>Any AGEC course not already required of you</i>	
<i>American History & Political Science (12 hrs)</i>		
Core Hist.		
Core Hist.		
POLS 206		
POLS 207		
General Electives (9 hrs)	AGEC 430 or ECON 311	Limitations <small>(see Howdy Degree Evaluation for complete list of degree limitations)</small>
<i>Select from any course not used elsewhere (except KINE 198-199)</i>	Supporting Coursework	Limitation At least 25 percent of the credit hours required for an undergraduate degree must be earned through instruction offered by Texas A&M University.
	AGLS 101	Limitation No more than 50% of courses required for the degree plan can be taken as Distance Education Courses for non-distance degree programs.
	<i>Technical Ag Elective</i>	Limitation Only one of the following will satisfy the requirements for a degree: CHEM 101/CHEM 111, CHEM 107/CHEM 117, and CHEM 119
	<i>Any College of Ag course not already required of you</i>	Limitation Only one of the following will satisfy the requirements for a degree: GENE 301, GENE 302, GENE 315, and GENE 320.
		Limitation Only one of the following will satisfy the requirements for a degree: MATH 131, MATH 142, MATH 147, MATH 151, and MATH 171.
		Limitation Only one of the following will satisfy the requirements for a degree: MATH 140, MATH 141, MATH 166 and MATH 168.
Directed Non-AGEC Electives (6 hrs)	ECON 202	Limitation Only one of the following will satisfy the requirements for a degree: MATH 148, MATH 152, and MATH 172.
<i>Select from list of Rural Entrepreneurship directed non-AGEC electives. See next page.</i>	ECON 203	Limitation Only one of the following will satisfy the requirements for a degree: MATH 221, MATH 251, and MATH 253.
	ACCT 209	Limitation Only one of the following will satisfy the requirements for a degree: MATH 304, MATH 309, MATH 311, and MATH 323.
	ACCT 210	Limitation Only one of the following will satisfy the requirements for a degree: BUSN 203, STAT 201, STAT 301, STAT 302 and STAT 303. AGEC requires STAT 303, 302, or 301. STAT 201 is not accepted.
	ECON 323	
	120 Total Degree Hours	

Department of Agricultural Economics
For Students Entering Under Catalog 202331 (Fall 2023)
B.S. degree in Agricultural Economics – Rural Entrepreneurship (RUE)
Suggested Semester by Semester Plan

Name: _____

UIN#: _____

Date: _____

FRESHMAN YEAR: FALL	HRS
AGEC 105	3
AGLS 101	1
ENGL 103 or 104	3
MATH 140	3
AMERICAN HISTORY	3
TECHNICAL AG ELECTIVE	3
AGEC 101 (FYE)	0
	16

FRESHMAN YEAR: SPRING	HRS
MATH 142	3
AMERICAN HISTORY	3
AGEC 117 [W]	1
LANGUAGE, PHILOSOPHY & CULTURE	3
LIFE & PHYSICAL SCIENCE	3
CREATIVE ARTS	3
	16

SOPHOMORE YEAR: FALL	HRS
ACCT 209 or 229	3
AGEC 217	3
ECON 202	3
POLS 206 or POLS 207	3
LIFE & PHYSICAL SCIENCE	3
	15

SOPHOMORE YEAR: SPRING	HRS
ACCT 210 or 230	3
ECON 203	3
POLS 206 or POLS 207	3
COMMUNICATIONS	3
LIFE & PHYSICAL SCIENCE	3
	15

JUNIOR YEAR: FALL	HRS
AGEC 330	3
AGEC 340	3
AGEC 429 [W]	3
DIRECTED NON-AGEC ELECTIVE	3
STAT 303	3
	15

JUNIOR YEAR: SPRING	HRS
ECON 323	3
AGEC 314	3
AGEC 344	3
DIRECTED AGECE ELECTIVE (AGEC 324 recommended)	3
GENERAL ELECTIVE	3
	15

SENIOR YEAR: FALL	HRS
AGEC 317	3
AGEC 424	3
DIRECTED NON-AGEC ELECTIVE	3
GENERAL ELECTIVE	3
	12

SENIOR YEAR: SPRING	HRS
AGEC 430/ECON 311	3
AGEC 425	3
DIRECTED AGECE ELECTIVE	3
DIRECTED AGECE ELECTIVE	3
GENERAL ELECTIVE	3
AGEC 481	1
	16

ICD _____

CD _____

Foreign Language _____

Directed Non-AGEC Electives List Rural Entrepreneurship (RUE)

AGCJ 305	Theory and Practice of Agricultural Publishing*
AGCJ 306	Theory and Practice of Agricultural PR*
AGCJ 404	Communicating Agricultural Info to the Public
AGCJ 406	Agricultural Public Relations Methods**
AGCJ 407	Web Authoring in Agricultural Communication*
AGSM 310	Agricultural Machinery Management
AGSM 335	Water and Soil Management*
AGSM 360	Occupational Safety Management
ALED 441	Ag. Extension Organization and Methods
ANSC 201	Introductory Equine Care and Use
ANSC 242	Growth and Development of Livestock*
ANSC 302	Basic Beef Cattle Production*
ANSC 307	Meats*
ANSC 311	Equine Behavior and Training
ANSC 312	Equestrian Technology (2 hrs.)
ANSC 314	Wool Evaluation and Grading (2 hrs.)
ANSC 315	Livestock Judging (2 hrs.)*
ANSC 316	Equine Selection and Judging (2 hrs.)
ANSC 317	Meat Selection, Eval. And Grading (2 hrs.)*
ANSC 402	Exploring Animal Industries (2 hrs.)
ANSC 408	Management of Stocker and Feedlot Cattle*
ANSC 411	Equine Nutrition and Health (2 hrs.)
ANSC 412	Swine and Goat Production and Mgmt. (4 hrs.)*
ANSC 414	Sheep and Goat Production and Mgmt. (4 hrs.)*
ANSC 420	Equine Production and Management (4 hrs.)*
ANSC 423	Issues in the Equine Industry
ANSC 434	Animal Reproduction Management*
ANSC 437	Marketing and Grading of Livestock and Meats
ANSC 439	Feedlot Risk Management (2 hrs.)
COMM 210	Group Communication and Discussion
COMM 215	Interviewing: Principles and Practices
COMM 320	Organizational Communication
ECON 418	Economics of Labor*
ECON 452	International Trade Theory and Policy*
EHRD 408	Globalization and Diversity in the Workplace
ENTO 201	General Entomology
ENTO 208	Veterinary Entomology*
ENTO 401	Principles of Insect Pest Management
ENTO 402	Field-Crop Insects*
ESSM 301	Wildland Watershed Management
ESSM 317	Vegetation Management*
FINC 409	Survey of Finance Principles
GEOS 444	The Science and Politics of Global Climate Change
HORT 301	Garden Science
HORT 315	Issues in Horticulture*
HORT 319	Fruit and Nut Production*
HORT 325	Vegetable Crop Production*
HORT 332	Horticulture Landscape Graphics (2 hrs.)
HORT 418	Nut Culture*
HORT 419	Viticulture and Small Fruit Culture*
HORT 420	Concepts in Wine Production*
HORT 421	Enology**
HORT 423	Tropical Horticulture*
HORT 425	Landscape Maintenance and Construction*
HORT 426	International Floriculture Marketing*
HORT 428	Greenhouse Operations and Management*
HORT 429	Floriculture Crop Production*
HORT 431	Nursery Production and Management
HORT 440	International Horticulture*
HORT 451	Retail Floristry*
HORT 452	Floral Design: Weddings and Personal Flowers*
HORT 453	Floral Art (2 hrs.)*
HORT 454	Special Event Design and Production (2 hrs.)
MGMT 209	Business Government and Society
MGMT 309	Survey of Management
MKTG 409	Principles of Marketing
POLS 475	Government and the Economy
POSC 304	Judging
POSC 309	Poultry Meat Production

POSC 313	Game Birds and Ornamental Fowl
POSC 319	Breeder and Hatchery management
POSC 326	Commercial Egg Industry
POSC 427	Animal Waste Management
RPTS 311	Planning and Implementing Events and Programs
RPTS 316	Recreational Management of Wildlands
RPTS 320	Event Management and Operations I*
RPTS 321	Event management and Operations II*
RPTS 331	Tourism Marketing*
RPTS 403	Financing and Marketing RPTS Resources*
SCSC 105	World Food and Fiber Crops
SCSC 301	Soil Science (4 hrs.)
SCSC 302	Recreational Turf
SCSC 309	Water in Soils and Plants
SCSC 422	Soil Fertility and Plant Nutrient Management*
SCSC 427	Sports Field Construction*
SCSC 428	Advanced Turf Ecology and Physiology
SCSC 429	Turf Management Systems (4 hrs.)*
SCSC 430	Turfgrass Maintenance (4 hrs.)*
SCSC 441	Crop Production Systems
SCSC 444	Forage Ecology and Management
SCSC 455	Environmental Soil and Water Science*
SOCI 329	Pacific Rim Business Behavior
SPMT 337	International Sport Business
SPMT 420	Sports Facility Planning**
SPMT 421	Legal Aspects of Sport**
VTPB 301	Wildlife Diseases
WFSC 301	Wildlife and the Changing Environment
WFSC 303	Fish and Wildlife Laws and Administration*
WFSC 327	Wildlife Diseases
WFSC 427	Disease Management in Fisheries and Aquaculture
WFSC 428	Wetland Ecosystem Management (4 hrs.)

Notes

- Major restrictions and prerequisites for courses may change. Although a course is listed, this does not guarantee that students are able to register. *Students should check to see if there are any prerequisites for the courses listed before registering.*
- Directed AGECElective
 - o Any AGECElective course that is not already listed as a required course on a student's degree plan
- Technical Ag Electives
 - o Select a class from the following departments in the College of Ag
 - Agricultural Leadership Education & Communications
 - Animal Science
 - Biochemistry & Biophysics
 - Biological & Agricultural Engineering
 - Ecosystem Science & Management
 - Entomology
 - Food Science & Technology
 - Horticultural Sciences
 - Nutrition
 - Plant Pathology & Microbiology
 - Poultry Science
 - Recreation, Park & Tourism Sciences
 - Soil & Crop Science
 - Wildlife & Fisheries Sciences
- Directed Non-AGECElectives
Select from list to the left or visit with your advisor to discuss using minor coursework, internship credit, or study abroad classes for this requirement.
- AGECElective 105 (required major coursework) also meets University Core Curriculum Social and Behavioral Science requirement.

***Prerequisite courses**

****Other Restrictions. Please check with an advisor**

EARN YOUR UNDERGRADUATE AND GRADUATE DEGREE AT THE SAME TIME!

THIS JOINT-DEGREE PROGRAM BETWEEN THE DEPARTMENT OF AGRICULTURAL ECONOMICS AND THE BUSH SCHOOL OF GOVERNMENT & PUBLIC SERVICE ALLOWS UNDERGRADUATE AGRICULTURAL ECONOMICS STUDENTS TO ENTER THE MASTER OF PUBLIC SERVICE GRADUATE PROGRAM IN THE BEGINNING OF THEIR FOURTH YEAR AT TEXAS A&M UNIVERSITY.

AGRICULTURAL ECONOMICS MAJORS WHO WILL HAVE COMPLETED AT LEAST 95 HOURS BY THE FALL OF THEIR FOURTH YEAR WITH A 3.25 GPA (AND COMPLETED ALL PREREQUISITE COURSES) WILL BE ELIGIBLE TO APPLY FOR THE FIVE-YEAR PROGRAM DURING THEIR JUNIOR YEAR. APPLICANTS TO THE FIVE-YEAR PROGRAM WILL SUBMIT THE SAME MATERIALS (INCLUDING GRE SCORES) AS OTHER MPSA APPLICANTS, AND THOSE WHOSE RECORDS ARE JUDGED TO BE COMPETITIVE BY THE MID-JANUARY DEADLINE WILL BE INVITED TO ATTEND THE GBS INTERVIEW CONFERENCE WEEKEND IN LATE FEBRUARY/EARLY MARCH. THE ADMISSIONS CRITERIA FOR THE FIVE-YEAR PROGRAM WILL BE THE SAME AS FOR OTHER MPSA STUDENTS.

CAREER OPTIONS:

- NON-PROFIT AND PHILANTHROPIC MANAGEMENT
- PUBLIC MANAGEMENT IN BOTH FOR-PROFIT AND NON-PROFIT SECTORS
- PUBLIC POLICY ANALYSIS



*This option is not available
for Agribusiness majors

3+2 Degree Program: **AGEC-MPSA** Public Policy Analysis Track



Earn a B.S. in Agricultural Economics and Master of Public Service & Administration in 5 Years!

The Bush School of Government & Public Service and the Department of Agricultural Economics offer a 5-year (3+2) degree program in which students can earn a Bachelor of Science in Agricultural Economics and Master of Public Service & Administration (with a track in **Public Policy Analysis**) in only five years.

Students begin their studies at Texas A&M University in the Agricultural Economics department taking 104 credit hours toward their undergraduate degree. Throughout the course of the student's three years at Texas A&M, the student works with their undergraduate advisor to ensure they satisfy all eligibility requirements listed below prior to applying to the MPSA in the fall of their junior year (when classified as a U3).

If admitted, students must ensure they fulfill the rest of the requirements listed below by the time they enter the Bush School in the fall of their senior year at Texas A&M University when classified as a U4. In the student's fourth year, they take 24 credit hours of Bush School graduate level courses; 13 credit hours of which will double count toward their bachelor's degree. In the student's fifth year, they are re-classified as a G7 graduate student and take the remaining 24 credit hours left to satisfy the requirements for the MPSA degree.

After successful completion of both degrees, students receive both their Bachelor of Science in Agricultural Economics (B.S. AGEC) and a Master of Public Service and Administration (MPSA) at the end of their second year at the Bush School. Although they earn both, students will only walk for their MPSA graduation.

Students who choose not to finish the MPSA degree after starting the 3+2 degree program may exist the program at any time. Completed Bush School courses will be applied to their bachelor's degree in AGEC, as appropriate. Failure to complete the MPSA program will in no way impede the student's ability to attain a bachelor's degree when the requirements for that degree are completed.

ELIGIBILITY REQUIREMENTS

To apply to the 3+2 MPSA/AGEC degree program, students must:

- ✓ be classified as a U3 majoring in Agricultural Economics at Texas A&M University, *and*
- ✓ have a 3.25 GPA or above by the start of the fall semester in which they will enter the 3+2 program (if admitted), *and*
- ✓ work with their undergrad advisor to map out courses the student must complete prior to entry into the 3+2 program (if admitted), *and*
- ✓ has (or will have) 66-78 credit hours of their undergrad degree completed by the start of the fall semester of their junior when they begin the 3+2 application process, *and*
- ✓ is predicted to have at least 104 credit hours of their undergrad degree completed by the start of the fall semester in which they will enter the 3+2 program, *and*
- ✓ has (or will have) a cumulative GPA of at least a 3.25 by the start of the fall semester in which they will enter the 3+2 program if admitted, *and*
- ✓ is in good academic standing with their undergrad department, *and*
- ✓ is not expected to graduate or complete their undergrad degree during the academic year in which they are applying, *and*
- ✓ understand that failure to satisfy ALL of these requirements will result in admission (if offered) being revoked to the 3+2 program.

ADMISSIONS

Agricultural Economics majors who satisfy (or will satisfy) all of the eligibility requirements above can apply to the 3+2 program in the fall of their junior year for entry into the 3+2 program in the fall of their senior year. Admission criteria for the 3+2 program is the same as for other MPSA students.

To apply, applicants submit an internal 3+2 application (available on our website at <https://bush.tamu.edu/admissions/degree/psaa/5year/>), where they are asked to upload all of their supporting documentation and submit to the Bush School Admissions Office by the application deadline. No application fee required.

Applications are reviewed in late January and invitations to interview are sent soon after. Interview Conference Weekend (ICW) is held in mid-to-late February, with alternative interviews conducted throughout the month for those who cannot attend ICW. Final admissions and scholarship decisions are made once interviews are complete. Decisions are emailed to applicants by March 15. Those offered admission have until April 15 to accept or decline their offer. Students begin the 3+2 program in the fall semester, with a required Bush School New Student Orientation the week prior.

CURRICULUM

Five-year students are required to complete the same 2-year, 48-hour curriculum as other MPSA students pursuing the Public Policy Analysis (PPA) track, starting in the fall of their senior year when classified as a U4. The MPSA curriculum combines ten core courses (30 credit hours) with six electives (18 credit hours), one of which must be selected from AGEC 604, 606, 607, 610, 614, 633, or 652. Students are encouraged to select from one of our options (<https://bush.tamu.edu/psaa/degrees/mpsa/concentrations/>) or create their own area of interest. Those without professional experience must complete a non-credit bearing professional internship in the summer between their fourth and fifth year (first and second year in the MIPSAs). A capstone project for a “real world” client in the final two semesters concludes the learning experience.

Courses to Complete PRIOR TO FOURTH YEAR (104 Credit Hours)

Students admitted into the 3+2 MPSA/AGEC degree must complete approximately 104 credit hours of their undergrad degree prior to enrollment in the Bush School’s MPSA in the fall of their fourth year.

Texas A&M Core: 42 Credit Hours	Major Coursework: 41 Credit Hours
ENGL 103 or 104 (3 hrs)	*AGEC 105 (3 hrs)
Communication (3 hrs)	AGEC 117 (1 hr)
STAT 303 (3 hrs)	AGEC 217 (W) (3 hrs)
MATH 140 & 142 (6 hrs)	AGEC 314 (3 hrs)
Life & Physical Science (9 hrs total, 3 hrs each)	AGEC 317 (3 hrs)
Language, Philosophy, & Culture (3 hrs)	AGEC 330 (3 hrs)
Creative Arts (3 hrs)	AGEC 340 (3 hrs)
American History (6 hrs)	AGEC 344 (3 hrs)
POLS 206 & 207 (6 hrs)	AGEC 350 (3 hrs)
*Social & Behavioral Science (3hrs)	AGEC 429 (W) (3 hrs)
Supporting Coursework: 15 Credit Hours	AGEC 430 or ECON 311 (3 hrs)
ECON 202 (3 hrs)	AGEC 452 or 453 (3 hrs)
ECON 203 (3 hrs)	AGEC 481 (1 hr)
ACCT 209 (3 hrs)	Directed AGEC Electives (6 hrs)
ACCT 210 (3 hrs)	Non-AGEC electives - 6 Credit Hours
ECON 323 (3 hrs)	Select from ECMT 461; ECON 433; FSTC 444; GEOG 330, 430;
Foreign Language: 8 hrs (if required)	GEOG 430; MKTG 409; POLS 340, 364, 412, 415, 439, 440,
Minimum of one (2 semesters) of foreign language required; or completion of 2 full years of the same foreign	447, 475; RWFM 436; URPN 360; WGST 430.

*AGEC 105 double counts as a Social & Behavioral Science Course

Courses to Complete AFTER ENTRY to 3+2 Degree (48 Credit Hours)

Students admitted into the 3+2 MPSA/AGEC degree must complete approximately 104 credit hours of their undergrad degree prior to enrollment in the Bush School's MPSA in the fall of their fourth year.

FOURTH YEAR: 24 credit hours	SUMMER: 0 credit hours
Fall Semester	Professional Internship
* PSAA 601: Foundations of Public Service (3 hrs)	FIFTH YEAR: 24 credit hours
* PSAA 621: Economic Analysis or *ECON 607: Microeconomic Analysis (3 hrs)	Fall Semester
* BUSH 631: Quantitative Methods I (3 hrs)	PSAA 675: Capstone Seminar I (3 hrs)
* PSAA 643: Foundations of the Nonprofit Sector (3 hrs)	PSAA 615: Policy Analysis (3 hrs) (PPA Track required crse)
Spring Semester	MPSA Elective (3 hrs)
PSAA 611: Public Policy Formation (3 hrs)	MPSA Elective (3 hrs)
* PSAA 622: Public Finance (3 hrs) (PPA Track required crse)	Spring Semester
* BUSH 632 or 635 (3 hrs) (PPA Track required crse)	PSAA 676: Capstone Seminar II (3 hrs)
** AGEC 600 Level Approved Elective (3 hrs) (AGEC 604, 606, 607, 610, 614, 633, or 652)	MPSA Elective (3 hrs)
	MPSA Elective (3 hrs)
	MPSA Elective (3 hrs)

* up to 13 hours of these courses can count as AGEC general electives

** double counts as Bush School elective course

As indicated above, students will double count courses taken in the Bush School as credit towards their MPSA degree *and* as substitutes for some of the AGEC electives and general electives required for the bachelor's degree.

ADVISING

It is imperative for students interested in the 3+2 MPSA work with their undergrad AGEC advisor as soon as possible to ensure the student is on track to complete all necessary courses prior to entry into the program, if admitted. The Bush School Admissions Office can help answer questions about the admissions process, but cannot help answer questions about undergrad degree or course requirements. The MPSA department is available to help answer questions about the MPSA curriculum or courses and will be the student's point of contact if admitted into the 3+2 program.

For questions about the MPSA curriculum or courses:

- Contact Elaine Lippard at elippard@tamu.edu or 979.862.8821.

For questions about admission into the 3+2:

- Contact the Bush School Admissions Office at bushschooladmissions@tamu.edu or 979.862.3476.

FINANCIAL PLANNING



Previously available as a minor, Financial Planning is an exciting NEW major in the Department of Agricultural Economics and **will be offered for the first time in Fall 2023!**



Financial planning is one of the fastest-growing career fields, and more people are turning to financial planners to help them make informed decisions to achieve their financial goals. The Texas A&M Financial Planning Program is designed to prepare you for this exciting profession while fulfilling the core educational curriculum necessary to sit for the CFP® Certification Examination. We pride ourselves in providing knowledge that goes beyond the exam and incorporate real world materials essential to developing skilled, comprehensive financial planners.

PRIOR TO THE CREATION OF
OUR NEW DEGREE,
STUDENTS IN THE
FINANCIAL PLANNING
PROGRAM HAVE WORKED
WITH COMPANIES SUCH AS
TDAMERITRADE,
VANGUARD, CHARLES
SCHWAB, AND MANY MORE!

INTERESTED IN LEARNING
MORE ABOUT THE
FINANCIAL PLANNING
PROGRAM DEGREE
REQUIREMENTS?

TALK TO AN ACADEMIC
ADVISOR!



MORE INFORMATION ABOUT

MINORS



ENHANCING YOUR AGECE MAJOR WITH

Minors and Certificates

Did you know that AGECE majors have a lot of elective areas that can be used towards incorporating minors or certificates without adding time to their program? Do you still have Non-AGECE electives, General Electives, AGES 101, or your Technical Agriculture elective coursework remaining? Then now is a great time to visit with your academic advisor! Your advisor can help you plan out your remaining coursework and explain how you can be strategic in completing your degree by using minor coursework to complete existing major coursework requirements!

While you don't necessarily have to pick a minor that is closely aligned with your degree, we've listed a few options below that work well with an AGECE degree (for more specific information on minors offered by the Department of Agricultural Economics, please see later pages in handbook)

<i>Finance and Real Estate</i>	<i>Food Marketing Systems</i>	<i>Policy and Economic Analysis</i>	<i>Rural Entrepreneurship</i>
<ul style="list-style-type: none">• Agrifood Sales• Agribusiness Entrepreneurship• Financial Planning• Economics• Business• Certificate in International Trade and Agriculture	<ul style="list-style-type: none">• Agrifood Sales• Certificate in International Trade and Agriculture• Economics• Business	<ul style="list-style-type: none">• Economics• Agrifood Sales• International Agricultural Development• Certificate in International Trade and Agriculture• Certificate in Philosophy Pre-Law	<ul style="list-style-type: none">• Economics• Agrifood Sales• Agribusiness Entrepreneurship• Certificate in International Trade and Agriculture• Certificate in Philosophy Pre-Law• Business

Agribusiness Entrepreneurship

This minor is for students who are interested in starting their own business, working in an existing family-owned business, working for an entrepreneur, pursuing employment with a bank or financial institution, or wanting a working knowledge of business development practices and strategies.

Students must take:

**AGEC 315 (3)
AGEC 424 (3)
AGEC 425 (3)
AGEC 434 (3)**

Select one from the following:

**AGEC 223 (1)
AGEC 423 (1)**

Select one from the following:

**AGEC 324 (3)
MGMT 461 (3)
MGMT 470 (3)
MGMT 477 (3)
MGMT 489 (3)**

16 TOTAL HOURS

Students must take:

**AGEC 216 (1)
AGEC 315 (3)
AGEC 316 (3)
AGEC 416 (3)**

Select one from the following:

**AGEC 314 (3)
MKTG 321 (3)
MKTG 409 (3)**

Select one from the following:

**AGEC 330 (3)
AGEC 340 (3)
AGEC 422 (3)
AGEC 424 (3)
AGLS 435 (3)**

16 TOTAL HOURS

AgriFood Sales

This minor essential for any student looking to pursue a career in professional sales, expand a strong network of industry representatives, and explore career development opportunities .

Agricultural Economics

Provides students majoring in other fields with a fundamental knowledge of the field of agricultural economics.

***This minor is not open to students majoring in AGECE**

**AGEC 105 (3)
AGEC 314 (3)
AGEC 330 (3)
AGEC 340 (3)**

AGEC 300-400 Level Electives (6)

18 HOURS

FOR MORE INFORMATION ON MINORS THAT ARE OFFERED BY THE DEPARTMENT OF AGRICULTURAL ECONOMICS, PLEASE SEE THE RESOURCES SECTION IN THE UNDERGRADUATE WEBSITE!

OUTSIDE MINORS THAT WORK WELL WITH AGECE AND AGBU DEGREES

Financial Planning

This program prepares students for leadership roles in the financial planning profession. The six-course curriculum (18 credit hours) also satisfies the educational requirements to be eligible to sit for the Certified Financial Planner™ (CFP®) exam.

<https://financialplanning.tamu.edu/academics/academic-credit/>

Business

Students interested in pursuing a future MBA may find that when combined with appropriate statistics and economics coursework, the business minor provides the business foundation required by most MBA programs.

***This minor is not open to students majoring in Agribusiness**

<https://mays.tamu.edu/business-minors/>

Economics

A minor in Economics provides knowledge and information that will make a student a better-informed consumer and participant in the world economy.

<https://econ.tamu.edu/degrees/minor/>

CITA

The Certificate in International Trade and Agriculture (CITA) offered by the Department of Agricultural Economics is designed to provide students with a complete knowledge and understanding of the global forces shaping change in agriculture. The CITA is available to all students, provided that all prerequisites are met. Specific certificate requirements are available in the Undergraduate Programs Office, Room 214 of the Agriculture and Life Sciences Building, of the Department of Agricultural Economics or at:

<https://agecon.tamu.edu/undergraduate/undergraduate/current-students/curriculum/certificate/>

Required Coursework

AGEC 429--Agricultural Policy

AGEC 452--International Trade and Agriculture (Fall only)

AGEC 453--International Agribusiness Marketing (Spring only)

Also select two from the following:

AGEC 430	Macroeconomics of Agriculture
ALEC 350	Global Agricultural Issues
ALEC 450	Global Social Justice Issues in Agriculture
ALEC 313	Culture Theory, Orientation and Adaption
ALED 422	Cultural Pluralism in Agriculture
ANTH 205	Peoples and Cultures of the World
ANTH 300	Cultural Change and Development
COMM 335	Intercultural Communication
COMM/JOUR 365	International Communication
ECON 330	Economic Development
ECON 410	Macroeconomic Theory
ECON 452	International Trade Theory and Policy
ESSM 314	Principles of MG Around the World
FINC/IBUS 446	International Finance
GEOG 202	Geography of the Global Village
GEOG 323	Geography of Latin America
MGMT/IBUS 450	International Environment of Business
MGMT/IBUS 452	International Management
MKTG/IBUS 401	Global Marketing
POLS 322	Western European Government and Politics
POLS 323	Political Systems of Latin America
POLS 333	International Cooperation
POLS 338	Government and Politics of Former Soviet Union
POLS 412	International Political Economy
POLS 424	Comparative Governmental Institutions
SPMT 337	International Sport Business

PEMC

*The **Professional Event Management Certificate** is focused on preparing students to design, plan, manage, implement, and evaluate experiences, meetings, and special events. Students will take hands-on event management coursework which covers planning, promotion, operational logistics, sponsorship, evaluation, contracting, media, fundraising, risk management, and vendor management. They will also learn using hands on experience to implement a number of community and campus events.*

<https://rpts.tamu.edu/pemc/>

Required Coursework

HMGT 211 – Planning & Implementation of Events and Programs

HMGT 223
HMGT 314

Also select 3 hrs from the following:
Managing Hospitality and Recreation Orgs
Service Quality for Hospitality Organizations

HMGT 320 – Event Management & Operations I

Also select 3 hrs from from the following:

AGCJ 306 Theory and Practice of Agricultural Public Relations
AGCJ 307 Design for Agricultural Media
COMM 260 Introduction to Communication and Sports
COMM 326 Event Communication Planning
HORT 203 Floral Design
HORT 416 Understanding Wine: From Vines to Wines and Beyond
HORT 452 Floral Design: Weddings and Personal Flowers
HORT 454 Special Event Design and Production
JOUR 451 Arts & Entertainment Journalism
HMGT 331 Tourism Marketing (prereq: RPTS 302)
HMGT 314 Service Quality for Hospitality Orgs (online only) IF NOT USED ABOVE
HMGT 484 Internship – Event management internship
THAR 245 Critical Design Studies
THAR 308 Stage Management and Arts Administration

RPTS 321 – Event Management & Operations II

RPTS 324 – Event Management Final Assessment

TEXAS A&M UNIVERSITY | MASTER OF AGRIBUSINESS



tx.ag/agribusiness

PROGRAM BENEFITS & FEATURES

- Quick Program: 39 credit hours, 3 semesters
- Intercollegiate degree: College of Agriculture & Life Sciences and Mays Business School
- Prerequisites offered
- World renowned faculty from the Departments of Agricultural Economics, Accounting, INFO, Management, and Marketing

Master of Agribusiness

The Texas A&M University's Master of Agribusiness (MAB) is an intercollegiate degree offered by the College of Agriculture and Life Sciences and the Mays Business School through the Intercollegiate Faculty of Agribusiness.



"My time with the MAB Program has provided me with an impressive education and strong professional development opportunities. Aside from the amazing faculty and staff, the program worked with me to achieve my personal and career goals."

Carolina Garcia '21
Master of Agribusiness Graduate

The MAB is a professional program that is uniquely focused on the food and agribusiness sector with an emphasis on combining economic and business analysis, and incorporating quantitative methods as the basis for decision-making. Case-based research and team performance, highlighting cultural and learning style diversity, are the cornerstones of the MAB integrated capstone courses in strategic management and financial analysis. One of the many strengths of the MAB program is the emphasis on oral and written communication as well as presentation skills.



NATIONALLY AND GLOBALLY RANKED
MASTERS PROGRAM

#1 Rank in
Country*

#3 Rank in
World*

*Eduniversal Best Masters, Rankings 2021



AGRIBUSINESS
TEXAS A&M UNIVERSITY

For more information or questions, contact
Karen Lepley, Program Manager



979.458.5539



lepley@tamu.edu



GRADUATE PROGRAM

You might be the
one we are
looking for!

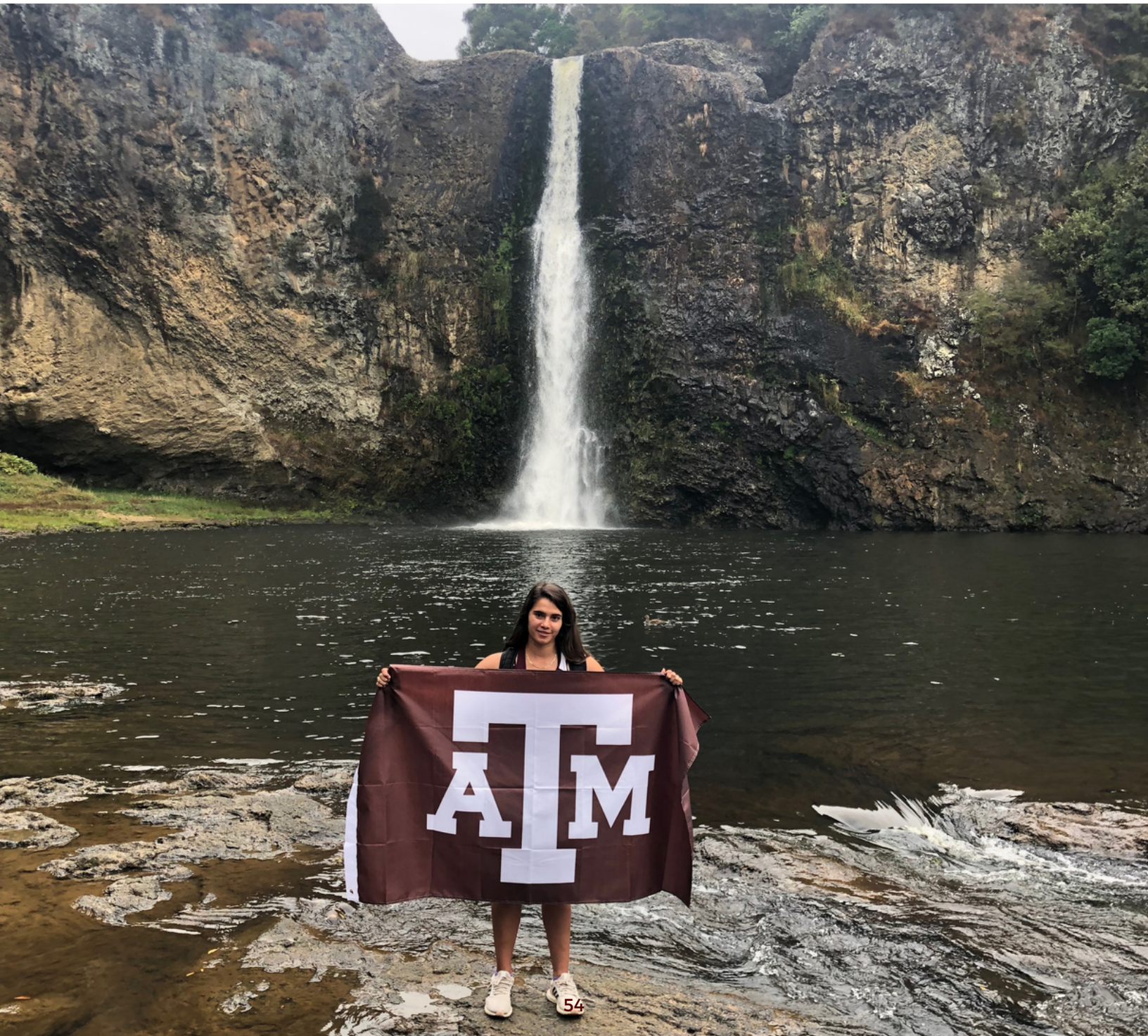


With over 150 students and more than 50 graduate faculty members, we offer one of the largest and most diverse graduate agricultural economics programs in the country. Thanks to the large and diverse student body hailing from more than 15 states and over 20 countries, students have the ability to collaborate and learn from others with different cultural backgrounds and various knowledge bases. The program is typically 45% Ph.D. students, 20% Master of Science students, and 35% Master of Agribusiness students, with 60% of our full-time graduate students funded through departmental assistantships and scholarships, University fellowships and scholarships, and research grants.

For more information about the MAB program, please contact:
mab@agecon.tamu.edu

Department of Agricultural Economics Graduate Program:
ae-gradoffice@tamu.edu

ENHANCE YOUR STUDENT EXPERIENCE



Honors Program



@agec_honors



The AGEH Honors program is offered to qualified, academically-talented, and highly motivated students.

Students in this program have the opportunity to enrich their college experience through a scholastically challenging curriculum and an inquiry-based learning process. In addition, students are provided with opportunities to network with peers in the program and participate in events that will help them develop at a professional level.

For more information about the program (including course requirements), please contact your academic advisor!

DEPARTMENT OF AGRICULTURAL ECONOMICS

Honors Checklist

	AGEC 105H OR AGEC 217H
	AGEC 317H
	AGEC 429H
	THREE HOURS OF HONORS CREDIT OUTSIDE THE DEPARTMENT
	THREE HOURS OF HONORS INSIDE OR OUTSIDE OF THE DEPARTMENT
	AGEC 491H RESEARCH
	ADDITIONAL HONORS COURSES

In order to graduate with departmental honors, students must have taken a minimum of eighteen (18) hours of honors courses according to the distribution listed above and successfully have completed their required PD events each semester. While you do not need to register for an honors class every semester, students who have not taken at least one honors class in the past academic year are strongly encouraged to add an honors class to their schedule as soon as possible. Students who are planning to add AGECE 491H research to their schedule will need to fill out the AGECE 491H Research form and submit it to the AGECE Undergraduate Office in AGLS 214 for approval at least one month prior to the start of the semester.

Notes:



STUDY ABROAD

WITH THE DEPARTMENT OF
AGRICULTURAL ECONOMICS!

DID YOU KNOW

The Department of Agricultural
Economics offers four study abroad
trips every summer?





Scotland



Ireland



Ghana



France

Doing an Internship?



Ask your advisor how to get degree credit!

FIND INTERNSHIPS NOW!



Did you know that internship credits can be accepted towards degree requirements??? Whether you're doing an industry internship or participating in the Agricultural and Natural Policy program, there's a lot of opportunity to gain real world experience while completing something you already need to do for your degree!



Industry Internships

Industry internships allow students to work with a company to gain additional instruction in an intended career field. Although you will need to visit with an advisor to determine whether or not internship credit can be used in your degree plan, most students are able to complement their degree by completing an internship!

To apply for industry internship credit, the Department of Agricultural Economics requires that the student:

- Have at least 12 hours completed in residence at Texas A&M University
- Have completed AGEC 105, ECON 202 or 203, MATH 141, MATH 142, AGEC 217, and ACCT 209 or 229.
- Sophomores (30-59 credit hours) must have a minimum 2.75 GPA for their overall, major, and (if applicable) CBK coursework.
- Juniors and Seniors (60 or more credit hours) must have a minimum GPA of at least a 2.5 in all GPA categories
- Visit with an advisor to obtain a request for Industry Internship Credit/Directed Studies form
- Complete Industry Internship Credit, Appendix A, and Appendix B forms, which can be found at: <http://agecon.tamu.edu/wp-content/uploads/2013/10/5-Intern-Manual-11-8-2011.pdf>.
- Have completed forms signed by the Director of Internship Programs (AGEC) **BEFORE beginning the internship**
- Submit signed forms to Suite 214 of the Agriculture and Life Sciences Building
- Make sure you have been registered for AGEC 484 before you start your internship (students may take 0-3 hrs of internship credit towards their degree)



TEXAS A&M UNIVERSITY
Agricultural & Natural Resources
Policy Internship Program



PAID INTERNSHIPS AVAILABLE IN D.C.!

Aggies Impact Ag Policy!

**FREE HOUSING
AGGIE COHORT EXPERIENCE**

anrp.tamu.edu

ARE YOU READY TO MAKE AN IMPACT?

Student Organizations



Agricultural Economics Society (AES)

AS THE REPRESENTATIVE OF THE NATIONAL AGRICULTURAL & APPLIED ECONOMICS ASSOCIATION (AAEA), THE AG ECON SOCIETY HAS EVOLVED TO BE A DYNAMIC, ACTIVE, AND ALL-INCLUSIVE STUDENT ORGANIZATION IN THE DEPARTMENT OF AGRICULTURAL ECONOMICS AT TEXAS A&M UNIVERSITY.



INFO@AGECONSOCIETY.TAMU.EDU

AGEC Aggie REPS

STUDENTS ARE SELECTED AS MEMBERS OF THIS ELITE GROUP BECAUSE OF THEIR LEADERSHIP SKILLS, PRESENTATION CAPABILITIES, COMMITMENT TO THE AGGIE WAY OF LIFE, AND HIGH ACADEMIC SUCCESS. AGGIE REPS HELP FACILITATE EVENTS CONNECTING STUDENTS AND FACULTY IN THE DEPARTMENT OF AGRICULTURAL ECONOMICS AND ALSO PROVIDE INFORMATION FOR PROSPECTIVE AND CURRENT STUDENTS.



D-MENZIES@TAMU.EDU



MORE DETAILS CAN BE FOUND AT: <https://studentactivities.tamu.edu/>

-continued-



Financial Planning Student Association

PROVIDES CURRENT STUDENTS, WHO ARE PURSUING A FINANCIAL PLANNING CAREER, AN OPPORTUNITY TO CONTINUE THEIR LEARNING OUTSIDE OF THE CLASSROOM THROUGH GUEST SPEAKERS, ATTENDANCE AT SPECIAL EVENTS AND PARTICIPATION IN NATIONAL COMPETITIONS.

Professional Sales Student Association

OUR MISSION IS TO PROVIDE CAREER AND PROFESSIONAL GROWTH OPPORTUNITIES FOR STUDENTS. OUR FOCUS IS TO CREATE AN ENVIRONMENT THAT FACILITATES THE DEVELOPMENT, NETWORKING, AND MENTORSHIP OPPORTUNITIES FOR STUDENTS INTERESTED IN SELLING THEMSELVES, THEIR IDEAS, AND A CAREER IN PROFESSIONAL SALES.



MORE DETAILS CAN BE FOUND AT: <https://studentactivities.tamu.edu/>

-continued-



National Agri-Marketing Association (NAMA)

AN ACCREDITED STUDENT CHAPTER OF THE NATIONAL AGRI-MARKETING ASSOCIATION (NAMA), AN ORGANIZATION OF PROFESSIONALS INVOLVED IN MARKETING, SALES, ADVERTISING, AND PUBLIC RELATIONS ASSOCIATED WITH AGRIBUSINESS AND OUR NATION'S FOOD AND FIBER INDUSTRY.



nama@stuact.tamu.edu

The Society of Finance, Insurance, and Real Estate (FIRE)

AIMS TO INTRODUCE STUDENTS TO CAREER OPPORTUNITIES IN THE FIELDS OF FINANCE, INSURANCE, AND REAL ESTATE IN ADDITION TO RELATED AREAS SUCH AS LAW, BANKING AND ENERGY. WE ENCOURAGE OUR MEMBERS TO BUILD PROFESSIONAL RELATIONSHIPS AND NETWORK WITH INDUSTRY PROFESSIONALS AND EMPLOYERS.



v-salin@email.tamu.edu



MORE DETAILS CAN BE FOUND AT: <https://studentactivities.tamu.edu/>



FALL KICKOFF

Hosted by the AGEC Aggie Reps at the start of every fall semester, this is our big "Welcome Back" event for AGEC and Agribusiness majors! Come join fellow students, faculty, and staff for prizes, food, and fun!





SKYP LUNCH

(Students, Know Your Professors!)

SKYP lunches are a great opportunity to get to know more about AGEC faculty or hear from a career professional while enjoying a free lunch with fellow students!



DEPARTMENT OF AGRICULTURAL ECONOMICS

Scholarships

The Department of Agricultural Economics offers a number of scholarships to continuing students in our department (departmental scholarships are not offered to incoming students). The criteria for each scholarship offered by the Department of Agricultural Economics varies widely: in addition to the overall GPR, financial need, extra-curricular activities, and leadership requirements, some scholarships consider professional career interest, residency in a particular county in the state, and participation in departmental clubs. See <http://agecon.tamu.edu/wp-content/uploads/2013/10/AGEC-Departmental-Scholarships-and-Requirements.pdf> for a list of departmental scholarships and their unique requirements. Applications are available online at <https://scholarships.tamu.edu/> at the end of September or in early October. The deadline for submitting an application is February 1. You will need to select the “Continuing Students” link. Specific dates will be posted in the AGECEXpress Newsletter. For more information regarding departmental scholarships, students may contact the AGECEXpress Undergraduate Office.

**Students who are interested in departmental scholarships should begin their club involvement within the Department of Agricultural Economics.*

TAMU PROCEDURES



GPA

REQUIREMENTS

HOW DO I KNOW WHAT GRADE I NEED?

AGRICULTURAL ECONOMICS MAJORS

3 GPA Categories

Major
Term
Overall

AGRIBUSINESS MAJORS

4 GPA Categories

Major
Term
Overall
CBK

At Texas A&M University, the minimum GPA to be in good academic standing is a 2.0. Therefore, students in the AGECE and AGBU majors will need to have at least a 2.0 or above in EVERY GPA category to remain in good academic standing. Except in the case of ECON 202 and any minor coursework (which requires a C or higher), a grade of D is considered passing; **HOWEVER**, you'll need to check on how receiving this grade would impact your GPA categories. So if you want to know "Can I make a D in my class and still be okay?" the answer is: it depends!

Overall GPA= Average of all classes taken at TAMU/TAMU Institutions

Term GPA= Average of all classes in a single semester (like Fall 2021, etc.)

Major GPA= Average of all classes with the "major" designation

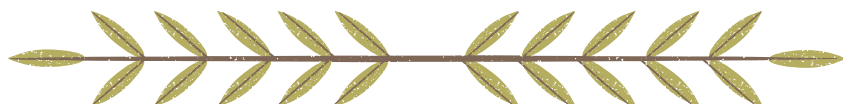
CBK GPA= Average of all Core Business Knowledge courses (this GPA category is for Agribusiness majors only)

Graduation

graduation.tamu.edu

- A minimum of 36 hours of 300-and/or 400-level course work must be successfully completed in residence at Texas A&M University. At least 12 of these 36 semester hours must be "in the major."
- Students must have a minimum GPR of at least a 2.0 overall, in major and (for Agribusiness majors) in CBK course work.
- Students must have settled all financial obligations to the university, and completed the graduation application in Howdy.
- Detailed requirements for graduation are listed in the Undergraduate Catalog and in the Texas A&M University Student Rules, Rule 14.
- For helpful information in preparing for graduation, see the "**Graduation Checklist**" included in the website listed above.
- To graduate with Latin Honors, a student must complete at least 60 passed hours at Texas A&M University or Texas A&M University at Galveston (excluding Credit by exam and Graduate Level courses) and meet the following GPR requirements:

Summa Cum Laude: 3.9 or above
Magna Cum Laude: 3.70 through 3.899
Cum Laude: 3.5 through 3.699



Aggie Ring Information

<https://www.aggienetwork.com/ring/>

- 90 total completed undergraduate or professional hours
- 45 completed institution undergraduate or professional hours
- 2.0 minimum cumulative GPR
- Must not be on academic probation, suspension, dismissal, expulsion, or on honor violation probation from Texas A&M University

Please visit the Aggie Ring website at
<http://www.aggienetwork.com/ring/qualifications.aspx>
or contact the Ring Office at 979-845-1050 for more information

Communication

TAMU Email

It is your responsibility to check your TAMU email multiple times a day!

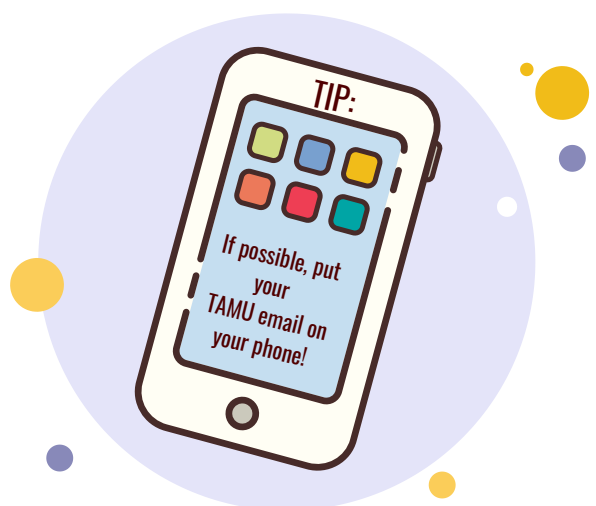
Please use your official TAMU student email when contacting us so that we can verify that it is you. Read all emails we send you completely and carefully. We know that you receive numerous emails daily from different sources, but you are responsible for reading everything sent from us. We will send out emails regarding registration, job fairs, special events, and important announcements.

You can go to gateway.tamu.edu to unsubscribe from email lists. You cannot unsubscribe from AGECEC emails.

Log In > Email Settings > Change Email Subscriptions

Don't
forget!

ALWAYS INCLUDE YOUR UIN IF
CONTACTING AN ACADEMIC
ADVISOR



Howdy

Connecting you to Texas A&M

As a current student, you have access to academic, billing, and financial aid information with your Net ID and password in the Howdy portal.



**My
Dashboard**

Your *My Dashboard* inside *HOWDY* has many tools including, but not limited to:

- *Degree Evaluation*
- *Undergraduate Degree Planner*
- *Credit by Examination*

Credits By Examination

Advanced Placement and International Baccalaureate credit. Students should verify with an advisor before accepting any AP/IB credit. All scores from all tests (SAT/ACT/AP/IB/MPE/etc.) that have been received at Texas A&M are available in the “My Record” menu of the “My Dashboard.”

Transcripts

A listing of all courses on record at Texas A&M. This includes current coursework (in progress) and completed coursework. Students are able to print unofficial transcripts from the “Academic Record and Planning” section in the “My Record” menu under “My Dashboard.” Students may also request official Texas A&M transcripts at the same location (there will be a fee associated with ordering an official transcript).

Registration Holds

Students are responsible for continuously checking for holds on their account. Holds can prevent you from registering for classes, so be sure to check your account on a regular basis!

How to check holds in Howdy:

<https://cdn.eis.tamu.edu/public/MyRecord/Registration-Readiness.mp4>

You will have some holds to take care of early in your first semester.
Hint: Take care of these before midterms!

Bacterial Meningitis

You must submit your evidence of vaccination before your NSC. You **cannot register** for your first semester until you have completed this requirement!

<https://admissions.tamu.edu/meningitis.aspx>

High School Transcript

Be sure to submit your official high school transcript before the first week of classes! Students that do not complete this will not be able to make changes to their schedule or register for second-semester classes.

Title IX Training (a.k.a. Haven Training)

Part of being able and ready to assist a fellow Aggie comes from an understanding of the issues surrounding behaviors associated with sexual harassment and sexual violence. As a result of this need for education, and a desire to work towards a safer community for all members, TAMU is requiring all incoming students to engage in our online education program called Haven. You are asked to complete this education in two parts: pre and post education. After an intercession of 30 days, you will receive an email notification to complete Part 2.

You must complete this prior to preregistration for your second semester at TAMU

<https://studentlife.tamu.edu/deansoffice/titleixtraining/>

Things to Know About

Registering for Classes

Here's a few tips to help you get the classes you need!

- Learn how to use the **Aggie Schedule Builder** by watching this informative video
 - https://youtu.be/2_F17DvpCG4
- When considering a class section, always click on the course title to check:
 - **Prerequisites**=classes that have to be completed before taking this course
 - **Restrictions**=what students can take this particular section (if you don't match the restrictions for the section you are looking at, check the restrictions on a different section of the class)
 - **Instructor/Meeting Times**: where the class is located (i.e. will you have enough time to make it back and forth between classes)
- Unless you are an honors student, avoid trying to register for sections with "HNR" in the title

Types of Registration Periods

Pre-Registration=Early start on registration for currently enrolled students based on attributes/classification

Open Registration=Any current student can make changes

Add-Drop Week=First week of classes (see Academic Calendar for dates)

TIP:

Remember to check your Pre-Registration time ticket in the My Profile tab in Howdy each semester so you don't miss your head-start on registering for classes!

Success Tools

To better understand your academic requirements for graduation, you should be using all the tools below.

Be sure to use them each semester!

Academic Calendar



This is a schedule of all of the events that occur in an academic year. This includes important deadlines!

<https://registrar.tamu.edu/Catalogs,-Policies-Procedures/Academic-Calendar>



Undergraduate Catalog

The Undergraduate and Graduate and Professional catalogs provide information about the academic programs of Texas A&M University to students, prospective students, faculty and staff of the University. This includes information concerning admissions, academic regulations and requirements, services available to students, academic offerings and a list of the administrative officers and faculty of the University.

<https://catalog.tamu.edu/>

Tools Continued...

Core Curriculum

University Core Curriculum requirements are associated with your catalog year! When looking at degree requirements, be sure to pull up **your specific catalog**. This may mean you need to click 'Archives' when pulling up the catalog.

<https://catalog.tamu.edu/>

2022-2023 EDITION

Undergraduate Catalog

Graduate and Professional Catalog

Archives

Once you open your specific catalog, you will find the Core Curriculum by clicking on the following steps...

General Information > University Core Curriculum

In addition to the catalog, you can use <https://core.tamu.edu/> but you are responsible for confirming the core courses listed on this site by viewing the catalog at <https://catalog.tamu.edu/>

Dropping Courses

Q-Drops

1.18.4 Undergraduate students will normally be permitted four Q-drops during their undergraduate studies; however: State law prohibits students from having more than six dropped courses from all state institutions attended during their undergraduate career. Q-drops in one-hour courses will not count in the Texas A&M limit of four but will be included in the State-mandated limit of six dropped courses. If a lecture and companion lab are dropped at the same time, this will count as one Q-drop rather than two.

Students should plan to submit Q-drops **prior to noon** on the day of the deadline in order to allow enough time for processing the request before the system closes at 5pm. For more information, visit: <https://student-rules.tamu.edu/rule01/>

Withdrawing

Please refer to <https://student-rules.tamu.edu/rule17/> for more information regarding withdrawals. The official withdrawal form can be found in Howdy under the “My Record” tab; however, please be sure to consult with an advisor before withdrawing from the University. The deadline to withdraw without documentation is the last day to Q-drop (see TAMU Academic Calendar). A student may be allowed to withdraw after the Q-drop deadline, but only in the event of unusual or extenuating circumstances.



Department of Agricultural Economics Dismissal Policy

TAMU Student Rules Sections 12.1 through 12.1.4 define scholastic deficiency, and 12.2 through 12.2.4 provides university rules regarding students who are scholastically deficient.

Dismissal

Students will receive a Dismissal letter (i.e. be dismissed from continued enrollment in the Department of Agricultural Economics) if their cumulative GPA falls below a 2.0. Students may receive a Dismissal letter for poor academic performance in the Core Business Knowledge (CBK) courses and/or their courses in major if their grade point deficit is greater than six (6). Students will be allowed to appeal the dismissal; however, there is NO guarantee that an appeal will be accepted.

For an appeal to be considered, students must provide a type-written letter stating the adverse circumstance(s) contributing to their poor academic performance. The appeal must also include documentation substantiating the reason(s) for poor academic performance. All documentation is subject to verification. Should the appeal be accepted, the student will be sent a “Scholastic Probation” letter. Copies of dismissal letters are sent to the student’s TAMU email AND via US mail to the address(es) the student has on their Howdy Portal.

Scholastic Probation

Students will receive a Scholastic Probation letter if their GPA in major and/or in their Core Business Knowledge (CBK) falls below a 2.0. Scholastic Probation letters will also be given in the event that a student's term GPA falls below a 2.0. Students with a grade point deficiency of more than six (6) will receive a dismissal letter.

Students receiving a Scholastic Probation letter must meet each of the following requirements:

- Make up the total grade point deficiency indicated in Scholastic Probation letter
- Meet with the Assistant Department Head for Undergraduate Student Affairs by the deadline date indicated in the Scholastic Probation letter
- Enroll in the appropriate courses that will allow the student to make up their grade points (for example, if the student is deficient in their CBK GPA, the student must enroll in one or more CBK courses)

PLEASE NOTE:

- Students will be allowed to be on Scholastic Probation only ONCE during their tenure in the Department of Agricultural Economics.
- Students who fail to meet ALL the requirements stipulated in the probation letter will be dismissed from further enrollment in the Department of Agricultural Economics.
- Agribusiness majors who are scholastically deficient in CBK courses only (i.e. with cumulative GPA and major GPAs still above a 2.0) may elect to change to the Agricultural Economics degree which does not require CBK courses. Once an Agribusiness major changes to Agricultural Economics, they will not be allowed to return to the Agribusiness degree at a later date.
- Students will receive either a dismissal or scholastic probation letter if their major and/or CBK GPA falls below a 2.0. The type of letter received will depend on the size of their grade deficiency.

Helpful Links

ASK AN AGEC ADVISOR FAQ

[HTTPS://DOCS.GOOGLE.COM/FORMS/D/E/1FAIPQLSCX-GIIBPQ1TS_RPPOTZZDC5LW8K5TWW44AMGMXFB8Q-QXHHG/VIEWFORM?USP=SF_LINK](https://docs.google.com/forms/d/e/1FAIPQLSCX-GIIBPQ1TS_RPPOTZZDC5LW8K5TWW44AMGMXFB8Q-QXHHG/VIEWFORM?USP=SF_LINK)

UNDERGRADUATE DEGREE PLANNER

[HTTPS://YOUTU.BE/-1A7QLKYFQE](https://youtu.be/-1A7QLKYFQE)

CHECKING HOLDS

[HTTPS://YOUTU.BE/Q7WPFMVOAVO](https://youtu.be/Q7WPFMVOAVO)

CHECKING REGISTRATION TIMES

[HTTPS://YOUTU.BE/NZR6ASHVEUS](https://youtu.be/NZR6ASHVEUS)

COMPLETE LAB SAFETY AGREEMENT

[HTTPS://YOUTU.BE/N80UVEJFQ-Q](https://youtu.be/N80UVEJFQ-Q)

COURSE SEARCH BASIC VIEW

[HTTPS://YOUTU.BE/QVNXF2CDJ50](https://youtu.be/QVNXF2CDJ50)

COURSE SEARCH ADVANCED VIEW

[HTTPS://YOUTU.BE/RMMUEJCARJC](https://youtu.be/RMMUEJCARJC)

ADVANCED SEARCH FEATURE

[HTTPS://YOUTU.BE/RGS6X5A-7FU](https://youtu.be/RGS6X5A-7FU)

ADVANCED SEARCH FEATURE WITH ATTRIBUTES

[HTTPS://YOUTU.BE/HUKMSOWVAA4](https://youtu.be/HUKMSOWVAA4)

REGISTRATION WORKSHEET HELP

[HTTPS://YOUTU.BE/HUKMSOWVAA4](https://youtu.be/HUKMSOWVAA4)

AGLS ROOM RESERVATIONS AND POLICIES

[HTTPS://DRIVE.GOOGLE.COM/FILE/D/1NWKIC0YJDQUDT05HFZ06EDDEJLYF5ZK/VIEW?USP=SHARING](https://drive.google.com/file/d/1NWKIC0YJDQUDT05HFZ06EDDEJLYF5ZK/VIEW?USP=SHARING)

ECON TUTORING LABS

[HTTPS://LIBERALARTS.TAMU.EDU/ECONOMICS/UNDERGRADUATE/CURRENT-STUDENTS/TUTORING-LAB/](https://liberalarts.tamu.edu/economics/undergraduate/current-students/tutoring-lab/)



Terms and Definitions

Technical Ag Elective: Requirement can be met by ANY class from the College of Agriculture and Life Sciences, coursework counting towards a minor, study abroad coursework, internship coursework, or transfer coursework. Agribusiness students are able to use an AGECE course towards this requirement, but AGECE students should look in an outside department. Since the list of course offerings from the College of Agriculture and Life Sciences is so immense there is no way to make a comprehensive list of all the courses that will count towards this category (see "Technical Agriculture Elective" page for list of departments offering courses that would count towards this requirement).

Directed AGECE Elective: ANY AGECE course not already specified by number on the degree plan (ex. AGECE 217 is a required course listed by number on the degree, so this class could not be used to meet this requirement). This is a good category to incorporate internship, AGECE-based minor (AGBE, AGFS), or AGECE Study Abroad. Financial Planning courses (AGLS 235, 335, 435, 436, 437, 438, 439, 441) may also be accepted towards this requirement, but students will want to verify with their academic advisor.

Directed Non-AGECE Elective: course from specific list based on selected concentration (FRE, FMS, PEA, RUE). This requirement is intended to enhance the student's career-based knowledge, and as such we will also accept internship credit, study abroad, or minor coursework for this area. If a student has to complete foreign language coursework and does not have space in their general electives, that credit may be used here with approval of advisor. A list of the courses accepted for your concentration is located earlier in the handbook. This is an Agricultural Economics major only requirement.

Directed International Elective: From specific list in student handbook. Study abroad may also be used to meet the requirement. Several courses from this list can also check off a student's ICD requirement, and depending on the student's selections might also be used towards incorporating the CITA into the student's degree. This is an Agribusiness major only requirement.

General Elective: Any class other than KINE 198/199 (one hour of KINE 198/199 may be accepted towards this area but will need to check with an academic advisor). This is a good degree area to incorporate minor coursework, study abroad, or internship.

Internships: A student can use an internship to meet degree requirement for Non-AGECE electives, General Elective, Technical Ag, or Directed AGECE Elective categories. In order to receive credit for an internship, must be approved with all paperwork completed PRIOR to the start of the internship. A max of three (3) hours of internship credit can be used towards degree requirements.

Study Abroad: may be used towards General Elective, Technical Ag Elective, Dir. Non-AGECE elective, or Dir. International Elective. If participating in a study abroad experience through the AGECE department, study abroad can be used towards the Dir. AGECE electives. In certain cases, Study Abroad may also be used to count towards the CITA requirements.

Common Course Substitutions

- AGECE 432 (spring only) can be met with AGECE 434 (spring only). Students interested in financial planning may also visit with their academic advisor to see if AGLS 435 can be used towards this requirement.
- AGECE 430 degree requirement can be met with ECON 311 or ECON 410 (ECON 311 is the recommended substitute)
- STAT 303 can be met with STAT 302 or 301; however, these are geared towards the sciences and are less applicable to the knowledge needed for AGECE/AGBU majors.
- Students in the FRE option may take either AGECE 324 or AGECE 424 to meet the AGECE 424 degree requirement

General Tips

- AGECE majors cannot do an AGECE minor
- Agribusiness majors cannot do a BUSI minor
- We highly recommend that students planning to take AGECE 424 should avoid taking more than 12-13 hours in that semester
- Students planning to take AGECE 424 should consider taking AGECE 324 prior to this course if possible
- Students that need to take ECON 323 and STAT 303 for their degree should try to avoid taking these classes in the same semester.
- Pay attention to the AGECE 317 prerequisite order (prerequisites may not be taken concurrently, so students will want to complete them in a timely manner in order to graduate by planned semester).
- core.tamu.edu displays the list of acceptable options for the core coursework categories
- The "Template" and "Pre-Req Check" tabs in the degree planner has a lot of helpful notes for arranging your coursework
- Want to avoid lines? The best time to visit with your academic advisor is in February and October!

Quick Question?

Try the "Ask an AGECE Advisor" Meme form included on the helpful links page or your advisor's virtual office!



DID YOU KNOW
THERE'S A STUDY SPACE
ON CAMPUS JUST FOR
STUDENTS IN THE
DEPARTMENT OF
AGRICULTURAL
ECONOMICS?

FINDING A

Technical Agriculture Elective

Use this list of departments to begin your search (and always be sure to check prerequisites and restrictions to make you are able to take the classes you are thinking about!)

- **Agricultural Communications and Journalism (AGCJ)**
- **Agricultural Systems Management (AGSM)**
- **Animal Science (ANSC)**
- **Bioenvironmental Sciences (BESC)**
- **Dairy Science (DASC)**
- **Entomology (ENTO)**
- **Food Science and Technology (FSTC)**
- **Forensic Investigative Sciences (FIVS)**
- **Horticulture (HORT)**
- **Nutrition and Food Science (NFSC)**
- **Poultry Science (POSC)**
- **Recreation, Park and Tourism Sciences (RPTS)**
- **Renewable Natural Resources (RENR)**
- **Soil and Crop Sciences (SCSC)**
- **Veterinary Integrative Biosciences (VIBS)**
- **Veterinary Large Animal Clinical Sciences (VLCS)**
- **Veterinary Pathobiology (VTPB)**
- **Veterinary Physiology and Pharmacology (VTPP)**
- **Wildlife and Fisheries Sciences (WFSC)**

Things to Know

Minor, study abroad, and internship coursework can also be used towards this category

Agribusiness students can take an AGECE class towards this requirement

Transfer students should check with their advisor to see if they have completed transfer courses that can be accepted here

AGEC CLASSES AND PREREQUISITES

- AGEC 101 Concepts in Agricultural Economics – First Year Experience: (Offered Fall)
- AGEC 105 Introduction to Agricultural Economics: (Offered Fall, Spring, and Summer)
- AGEC 117 Critical Thinking and Decision Making in Agricultural Economics: AGECE 105 or ECON 202 or ECON 203 (Offered Fall and Spring)
- AGEC 216 Fundamentals of the AgriFood Sales Industry: No prerequisites (Offered Fall and Spring)
- AGEC 217 Fundamentals of Agricultural Economics Analysis: AGECE 105; and ENGL 103 or ENGL 104; and MATH 168 or MATH 140 or MATH 166; and MATH 142; sophomore or junior; AGECE/AGBL majors (Offered Fall and Spring)
- AGEC 223 Establishing Agribusiness Entrepreneurship Networks I: Open to all majors (Offered Fall)
- AGEC 285 Directed Studies: AGECE 105; freshman or sophomore in AGECE or AGBL; 2.5 GPA in major, overall and CBK courses (if applicable) (Offered Fall, Spring and Summer)
- AGEC 289 Special Topics In...: Freshman or sophomore
- AGEC 291 Research: Freshman or sophomore (Offered Fall, Spring and Summer)
- AGEC 314 Marketing Agricultural and Food Products: AGECE 105 or ECON 202 or ECON 203; junior or senior (Offered Fall, Spring and Summer)
- AGEC 315 Food and Agricultural Sales: junior or senior (Offered Fall and Spring)
- AGEC 316 Building Customer Relationships in AgriFood Selling: AGECE 315; junior or senior (Offered Spring)
- AGEC 317 Economic Analysis for Agribusiness Management: AGECE 217; and ECON 323; and BUSN 203 (AGBU majors) or STAT 301 or STAT 302 or STAT 303 (AGECE majors); junior or senior; AGECE/AGBU majors (Offered Fall and Spring)
- AGEC 324 Agribusiness Entrepreneurship – Budgeting: AGECE 105 or ECON 202; and ACCT 209 or ACCT 210 or ACCT 229 or ACCT 230 or AGECE 330 or FINC 341 or FINC 409; junior or senior (Offered Fall and Spring)
- AGEC 325 Principles of Farm and Ranch Management: AGECE 105 or ECON 202; junior or senior; knowledge of excel (Offered Fall , Spring and sometimes summers)
- AGEC 330 Financial Management in Agriculture: AGECE 105 or ECON 202 or ECON 203; and ACCT 209 or ACCT 229; junior or senior (Offered Fall, Spring and Summer)
- AGEC 340 Agribusiness Management: AGECE 105 or ECON 202 or ECON 203; junior or senior (Offered Fall, Spring and Summer)
- AGEC 344 Food and Agricultural Law: junior or senior (Offered Fall and Spring)
- AGEC 350 Environmental and Natural Resource Economics: junior or senior (Offered Fall and Spring)
- AGEC 402 Survey of International Agricultural Economics– Study Abroad: AGECE 105 or ECON 202 or ECON 203; junior or senior (Primarily in summer, may be offered in Fall and Spring)
- AGEC 408 Economics of Foreign Intervention, Conflict and Development: AGECE 105 or ECON 202; and ENGL 104
- AGEC 413 Agricultural Cooperatives: AGECE 105; and AGECE 314; junior or senior (Offered Fall)
- AGEC 414 Agribusiness and Food Market Analysis: AGECE 317; and FINC 341; and MKTG 321; junior or senior; AGBU majors (Offered Fall and Spring)
- AGEC 415 Food and Agribusiness Strategic Market Planning: AGECE 314 or MKTG 321 or MKTG 409; and AGECE 315; junior or senior (Offered Spring)

AGEC 416 Sales Management and Advanced Techniques in Professional Technical Selling for AgriFood Firms: AGECE 315 (Offered Fall)

AGEC 420 Food Security, Climate and Conflict: AGECE 105 or ECON 202; junior or senior

AGEC 422 Land Economics: AGECE 105 or ECON 202 or ECON 203; junior or senior (Offered Fall, Spring and Summer)

AGEC 423 Establishing Agribusiness Entrepreneurship Networks II: AGECE 424 or concurrent enrollment; junior or senior; may not enroll in AGECE 223 and AGECE 423 during the same semester (Offered Fall)

AGEC 424 Agribusiness Entrepreneurship – Economic Analysis: AGECE 105 or ECON 202; and ACCT 209 or ACCT 210 or ACCT 229 or ACCT 230 or AGECE 324 or AGECE 330 or FINC 341 or FINC 409; junior or senior (Offered Fall)

AGEC 425 Agribusiness Entrepreneurship – Financial Analysis: AGECE 424; junior or senior (Offered Spring)

AGEC 429 Agricultural Policy: AGECE 105 or ECON 202 or ECON 203; and ENGL 103 or ENGL 104; junior or senior (Offered Fall and Spring)

AGEC 430 Macroeconomics of Agriculture: AGECE 105 or ECON 202 or ECON 203; and AGECE 317 or concurrent enrollment; and AGECE 429; and AGECE 330 or FINC 341 or FINC 409; junior or senior (Offered Fall and Spring)

AGEC 431 Cases in Agribusiness Finance: AGECE 317; and AGECE 340; and FINC 341; junior or senior; ABGU majors (Offered Fall and Spring)

AGEC 432 Rural Real Estate and Financial Analysis: AGECE 317; and AGECE 330 or FINC 341 or FINC 409; and AGECE 422; and ACCT 210 or ACCT 230; junior or senior (Offered Spring)

AGEC 434 Rural Financial Markets and Financial Planning: ACCT 209 or ACCT 229; and ACCT 210 or ACCT 230; and AGECE 330 or FINC 341 or FINC 409; junior or senior (Offered Spring)

AGEC 440 Agribusiness Strategic Analysis: AGECE 317; and AGECE 340; and FINC 341; and MGMT 363; and MKTG 321; junior or senior (Offered Fall and Spring)

AGEC 447 Food and Agricultural Price Analysis: AGECE 314; and AGECE 317; junior and senior (Offered Fall)

AGEC 448 Agricultural Commodity Futures: AGECE 105 or ECON 202 or ECON 203; and AGECE 314; and AGECE 317 or concurrent enrollment; junior or senior (Offered Spring)

AGEC 452 International Trade and Agriculture: AGECE 105 or ECON 202 or ECON 203; junior or senior (Offered Fall)

AGEC 453 International Agribusiness Marketing: AGECE 105 or ECON 202 or ECON 203; junior or senior (Offered Spring)

AGEC 460 Cross-Cutting Issues in Agricultural Economics: AGECE 317; and AGECE 314 or MKTG 321 or MKTG 409; and AGECE 330; or FINC 341 or FINC 409; and AGECE 429; AGECE/ABGU majors; junior or senior (Offered Spring)

AGEC 481 Ethics in Agribusiness and Agricultural Economics: AGECE 217; junior or senior; AGECE/ABGU majors (Offered Fall and Spring)

AGEC 484 Internship: Please see an advisor to discuss requirements

AGEC 485 Directed Studies: Please see your advisor to discuss requirements

AGEC 489 Special Topics In: Please see your advisor to discuss requirements

AGEC 491 Research: Please see an advisor to discuss requirements

AGEC 495 International Agribusiness and Industry Practices: AGECE 105; junior or senior

AGLS CLASSES AND PREREQUISITES

AGLS 235 Foundations of Money Education (offered fall and spring)

AGLS 335 Financial Readiness: junior or senior students intending to pursue career in military

AGLS 435 Financial Planning for Professionals: AGECE 330 or FINC 409 or FINC 341; junior or senior (offered fall, spring, and summer)

AGLS 436 Insurance and Estate Planning: Grade of C or better in AGECE 330 or AGLS 435 or FINC 409 or FINC 341; junior or senior (offered spring and summer)

AGLS 437 Tax Planning: Grade of C or better in AGECE 330 or AGLS 435 or FINC 409 or FINC 341; junior or senior (offered fall and summer)

AGLS 438 Investment Planning: Grade of C or better in AGLS 435 or concurrent enrollment; junior or senior (offered fall and spring)

AGLS 439 Retirement Planning: Grade of C or better in AGLS 435 or AGECE 330 or FINC 409 or FINC 341; junior or senior (offered fall and spring)

AGLS 441 Financial Planning Capstone: Grade of C or better in AGLS 435 and AGLS 436 and AGLS 437 and AGLS 438 and AGLS 439; junior or senior (offered fall, spring, summer)

MISC. CLASSES AND PREREQUISITES

ACCT 209 Survey of Accounting Principles

ACCT 210 Survey of Managerial and Cost Accounting Principles: ACCT 209 (or ACCT 229 with override)

ACCT 229 Introductory Accounting: sophomore classification

ACCT 230 Introductory Accounting: ACCT 229 and sophomore classification

BUSN 203 Statistical Methods of Business: MATH 140 or concurrent enrollment; and ISTM 210 or AGECE 217 or MARA 250 or concurrent enrollment

ECON 202 Principles of Economics (Microeconomics)

ECON 203 Principles of Economics (Macroeconomics): ECON 202

ECON 311 Money and Banking: ECON 203 with a grade of C or better

ECON 323 Microeconomic Theory: ECON 202 with a grade of C or better; and MATH 142 or MATH 151 or MATH 131 or MATH 171 with a grade of C or better

ECON 410 Macroeconomic Theory ECON 203 with a grade of C or better

FINC 341 Business Finance: ACCT 230 and BUSN 203 or concurrent enrollment; and ISTM 210 or AGECE 217 or MARA 250 or concurrent enrollment; and admission to upper division in Mays Business School

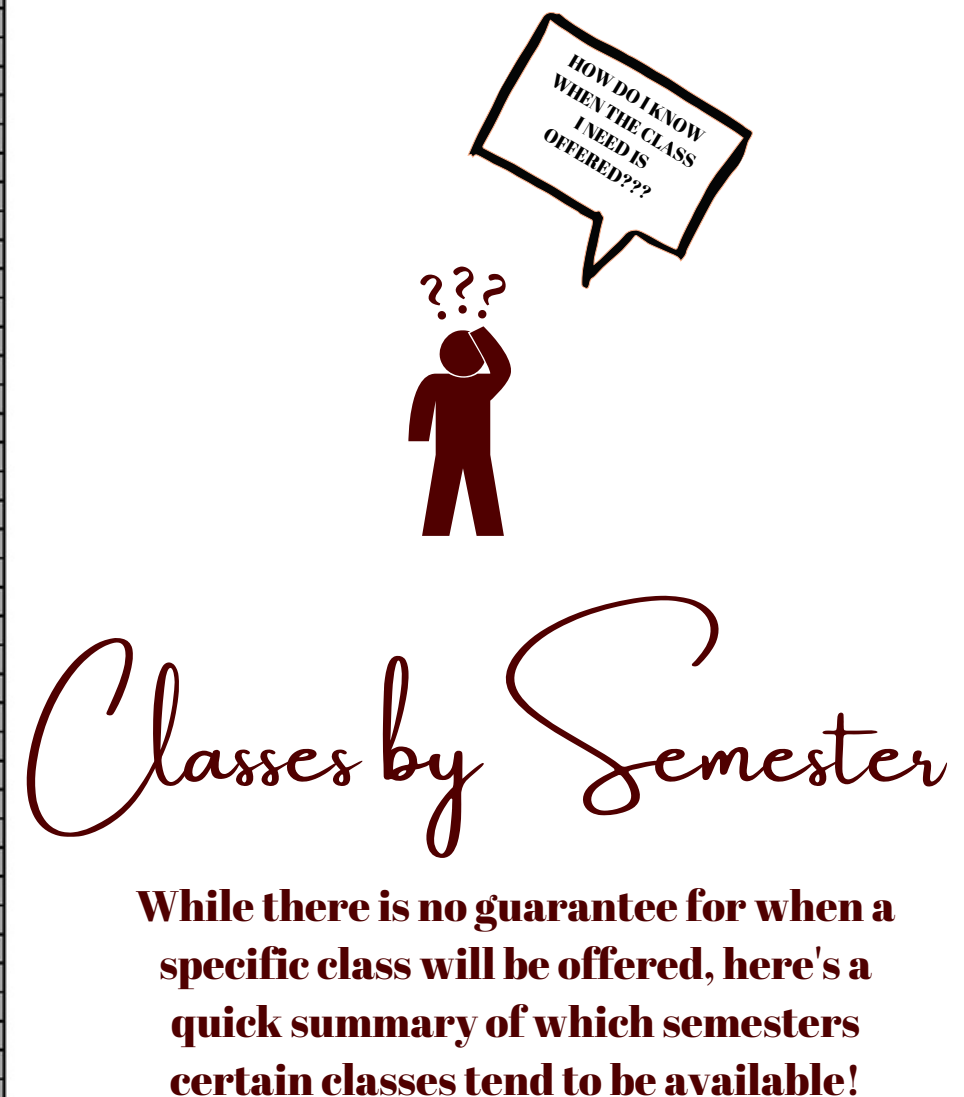
MGMT 311 Legal and Social Environment of Business: ACCT 230 or concurrent enrollment; and ISTM 210 or AGECE 217 or MARA 250 or concurrent enrollment; and admission to upper division in Mays Business School

MGMT 363 Managing People in Organizations: ACCT 230 and BUSN 203 or concurrent enrollment; and ISTM 210 or AGECE 217 or MARA 250 or concurrent enrollment; and admission to upper division in Mays Business School

MKTG 321 Marketing: ACCT 230 and BUSN 203 or concurrent enrollment; and ISTM 210 or AGECE 217 or MARA 250 or concurrent enrollment; and admission to upper division in Mays Business School

SCMT 364 Operations Management: BUSN 203 or STAT 301 or STAT 302 or STAT 301 or concurrent enrollment; and ACCT 230 and BUSN 203 or concurrent enrollment; and ISTM 210 or AGECE 217 or MARA 250 or concurrent enrollment; and admission to upper division in Mays Business School

Course Title	Typically Offered in Fall	Typically Offered in Spring	Typically Offered in Summer
AGEC 101 (0)	X		
AGEC 105 (3)	X	X	X
AGEC 117 (1)	X	X	
AGEC 216 (1)	X	X	
AGEC 217 (3)	X	X	
AGEC 223 (1)	X		
AGEC 314 (3)	X	X	10 week
AGEC 315 (3)	X	X	
AGEC 316 (3)		X	
AGEC 317 (3)	X	X	
AGEC 324 (3)	X	X	
AGEC 325 (3)		X	
AGEC 330 (3)	X	X	10 week
AGEC 340 (3)	X	X	10 week
AGEC 344 (3)	X	X	
AGEC 350 (3)	X	X	
AGEC 402 (3)			Study Abroad
AGEC 408 (3)	X		
AGEC 413 (3)	X		
AGEC 414 (3)	X	X	
AGEC 415 (3)		X	
AGEC 416 (3)	X		
AGEC 420 (3)		X	
AGEC 422 (3)	X	X	X
AGEC 423 (1)	X		
AGEC 424 (3)	X		
AGEC 425 (3)		X	
AGEC 429 (3)	X	X	
AGEC 430 (3)	X	X	
AGEC 431 (3)	X	X	
AGEC 432 (3)		X	
AGEC 434 (3)		X	
AGEC 440 (3)	X	X	
AGEC 447 (3)	X		
AGEC 448 (3)		X	
AGEC 452 (3)	X		
AGEC 453 (3)		X	
AGEC 460 (3)		X	
AGEC 481 (1)	X	X	
AGEC 495		X	
AGLS 235 (3)	X	X	
AGLS 335 (3)	X	X	
AGLS 435 (3)	X	X	10 week
AGLS 436 (3)		X	10 week
AGLS 437 (3)			10 week
AGLS 438 (3)	X	X	
AGLS 439 (3)	X	X	
AGLS 441 (3)	X	X	10 week
ACCT 209 (3)	X	X	X
ACCT 210 (3)	X	X	X
ACCT 229 (3)	X	X	X
ACCT 230 (3)	X	X	X
BUSN 203 (3)	X	X	X
ECON 202 (3)	X	X	X
ECON 203 (3)	X	X	X
ECON 311 (3)	X	X	
ECON 323 (3)	X	X	X
ECON 410 (3)	X	X	X
FINC 341 (3)	X	X	X
MGMT 311 (3)	X	X	X
MGMT 363 (3)	X	X	X
MKTG 321 (3)	X	X	X
SCMT 364 (3)	X	X	X
STAT 303 (3)	X	X	X



*New course

*New course

ON-CAMPUS RESOURCES

FULL LIST IS FOUND AT [HTTPS://STUDENTAFFAIRS.TAMU.EDU/STUDENTS/](https://studentaffairs.tamu.edu/students/)



COUNSELING & PSYCHOLOGICAL SERVICES

CAPS.TAMU.EDU
@TAMUCAPS
@TAMU_CAPS



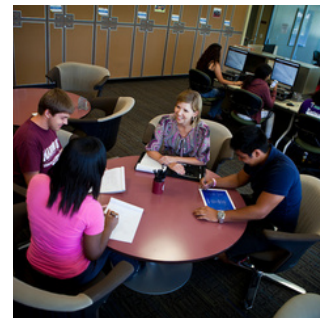
DISABILITY RESOURCES

DISABILITY.TAMU.EDU



ACADEMIC SUCCESS CENTER

ASC.TAMU.EDU
@SUCCESTAMU



STUDENT ASSISTANCE SERVICES

STUDENTLIFE.TAMU.EDU/SAS
@TAMU_STUDENTLIFE



AGEC WRITING CENTER

AGLS 210J



MATH LEARNING CENTER

MLC.TAMU.EDU
@TAMUMATHHELP



UNIVERSITY WRITING CENTER

WRITINGCENTER.TAMU.EDU
@TAMUWC



UNIVERSITY LIBRARIES

LIBRARY.TAMU.EDU
@TAMULIBRARIES



MULTICULTURAL SERVICES

DMS.TAMU.EDU
@DMSTAMU



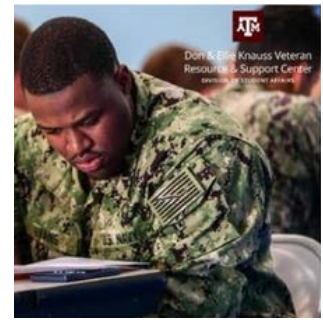
LGBTQ+ PRIDE CENTER

STUDENTLIFE.TAMU.EDU/LGBTQ
@TAMULGBTQ



WOMEN'S RESOURCE CENTER

STUDENTLIFE.TAMU.EDU/WRC
@TAMUWRC



VETERANS RESOURCE & SUPPORT CENTER

AGGIEVETERANS.TAMU.EDU
@VRSC.TAMU



INTERNATIONAL STUDENT SERVICES

ISS.TAMU.EDU
@TAMUISS



STUDENT HEALTH SERVICES

SHS.TAMU.EDU
@TAMU_SHS



CAREER CENTER

CAREERCENTER.TAMU.EDU
@HIREAGGIES



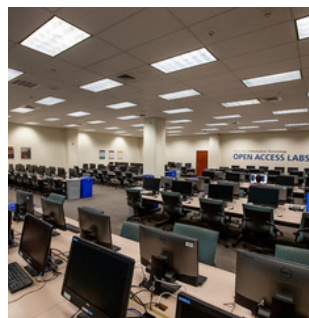
SEXUAL ASSAULT RESOURCES

TITLEIX.TAMU.EDU
STEPINSTANDUP.TAMU.EDU



SCHOLARSHIPS & FINANCIAL AID

FINANCIALAID.TAMU.EDU
@TAMUSFAID



DIVISION OF INFORMATION TECHNOLOGY

IT.TAMU.EDU
@TAMUIT



STUDENT BUSINESS SERVICES

SBS.TAMU.EDU



EDUCATION ABROAD

ABROAD.TAMU.EDU
@TAMUABROAD
@ABROADTAMU